



# STREET FURNITURE PROGRAM

REQUEST FOR INFORMATION BRIEFING SESSION, APRIL 8, 2021





---

# STREET FURNITURE PROGRAM



Michael D. Smith, City Manager's Office

Fran Fulton, Economic Development

James Lee, Torrance Transit

Sheila Poisson, Finance Department

Linda Cessna, Greg Lodan, Carolyn Chun, Community Development Department

---

# STREET FURNITURE PROGRAM

[TORRANCECA.GOV/STREETFURNITURE](http://TORRANCECA.GOV/STREETFURNITURE)

- WE ARE RECORDING
- USE “RAISE HAND” FEATURE TO SPEAK
- STATE NAME AND COMPANY

TORRANCECA.GOV



## TORRANCE PROFILE

- Roughly 21 Square Miles
- Located South of LAX
- 1.5 Miles of Beach
- 550 Miles of Sidewalks
- Over 800 Miles of Streets
- Population Just Under 150,000
- 8th Largest City in LA County
- 33rd in California

TORRANCECA.GOV

## STREET FURNITURE PROGRAM





# TORRANCECA



TORRANCECA.GOV





# STREET FURNITURE PROGRAM

- Essential Goal of this Project is to Provide Shelter, Shade, Safety, and Comfort to Transit Riders and Pedestrians
- Through Thoughtful, Efficient Design, and Implementation

TORRANCECA.GOV



# STREET FURNITURE PROGRAM

## CITY OF TORRANCE WAYFINDING AND SIGNAGE PLAN

### Citywide Wayfinding and Signage Plan



#### PURPOSE

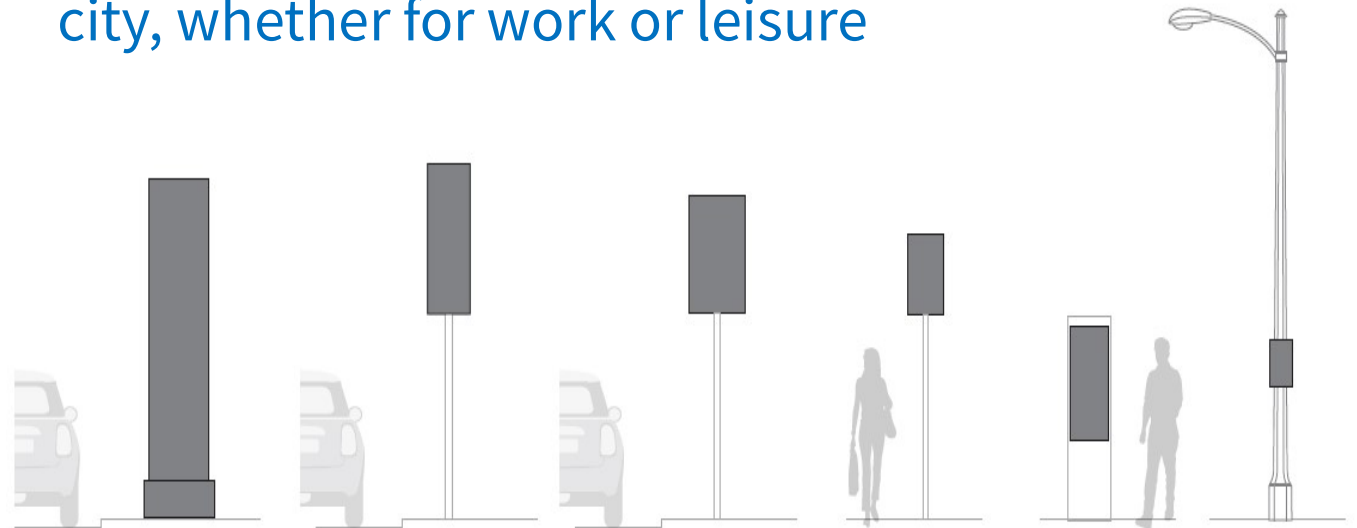
- Inventory of existing signage on Torrance city streets
- Plan for new, or upgrade existing
- Assessment of all traffic and wayfinding signage

# STREET FURNITURE PROGRAM

## CITY OF TORRANCE WAYFINDING AND SIGNAGE PLAN

### Citywide Wayfinding and Signage Plan

**Wayfinding** signage provides clear, accessible information to all users traveling throughout the city, whether for work or leisure



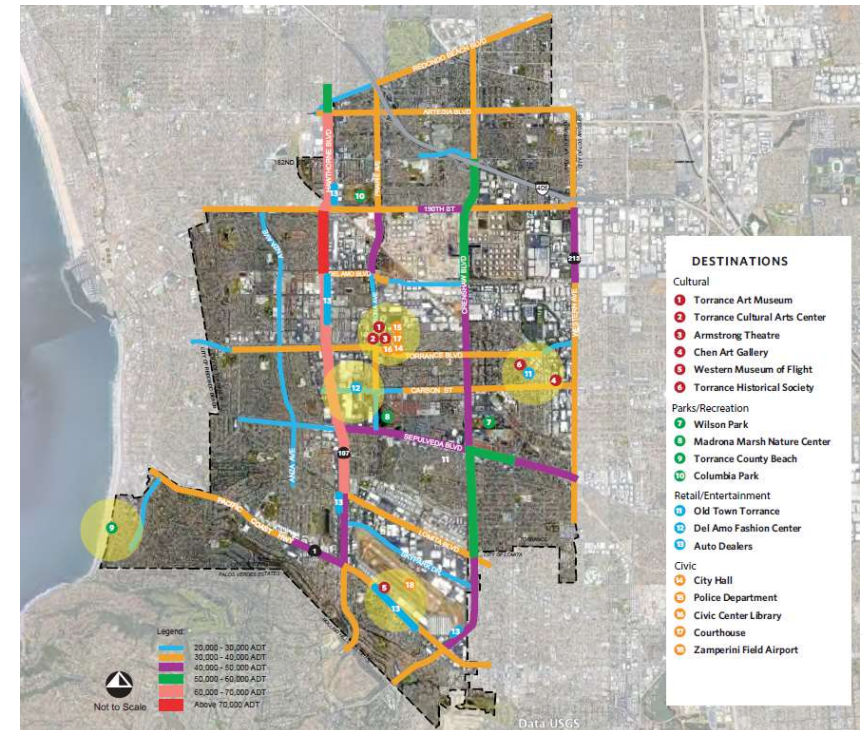


# STREET FURNITURE PROGRAM

## CITY OF TORRANCE WAYFINDING AND SIGNAGE PLAN

Wayfinding can make navigating the city easier and more intuitive to:

- Important Destinations
- The Torrance Regional Transit Center
- Where People are Most Likely to Walk or Bike to Reach their Destination
- Where People Sometimes have Difficulty Finding their Way





# STREET FURNITURE PROGRAM

## Torrance Transit Park and Ride Regional Terminal

- Leadership in Energy and Environmental Design (approx. 15,000 sq. ft.)
- Eight bus berths, and the ability for three of them to serve 60-foot articulating buses
- 250 space parking lot
- Passenger information kiosks
- Outdoor bicycle storage area
- Jumbo digital screen





## STREET FURNITURE PROGRAM

---

**Torrance Transit Tomorrow** *a comprehensive study of existing bus service*

- Route Design
- Schedules
- Ridership Trends
- On-time Performance and Policies

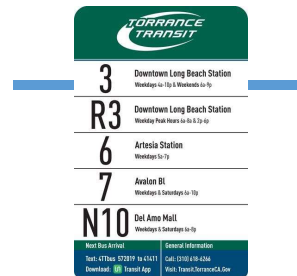
**TORRANCE TRANSIT**  
T O M O R R O W



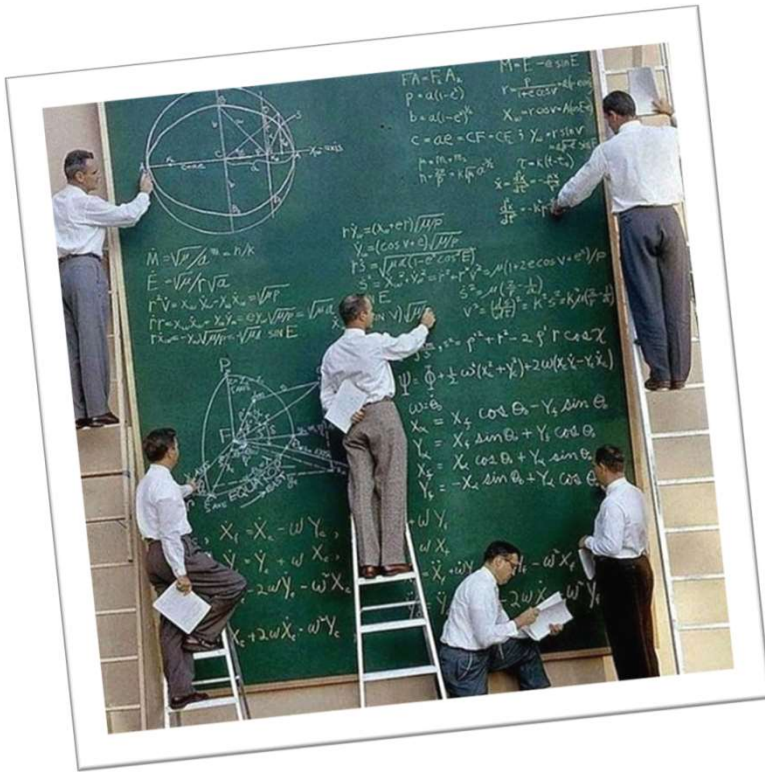


# STREET FURNITURE PROGRAM

- 69 Existing Shelters
- Improved and Expanded Furniture
- Enhanced Revenue
- Assist in the Development of a Request for Proposal



# STREET FURNITURE PROGRAM



What Advances in  
Technology, Manufacturing,  
and Design have Evolved  
That will Help Us and You  
Achieve Our Shared Goals?



# THANK YOU



[TorranceCA@TorranceCA.Gov](mailto:TorranceCA@TorranceCA.Gov)



[TorranceCA.Gov/StreetFurniture](https://TorranceCA.Gov/StreetFurniture)