

Instructions for Using City of Torrance Crime Mapping on the Internet

Overview:

This document is to provide basic information on how to use the Crime Mapping application on the Internet. It covers basic use of the map. There are many other things you can do with the map that are not included here; those you will have to learn by using it. The map is designed to keep the community aware and informed about crimes that have recently occurred. It is not intended for any kind of analysis, or for showing a history of crime in Torrance. Also, only certain categories of crime are shown on the map. Please refer to the [Terms of Use/Disclaimer page](#) for the Crime Map and the Torrance Police website to see what crimes are included and other information about the data.

Please contact CommunityAffairs@TorranceCA.Gov with any comments or feedback on this map.

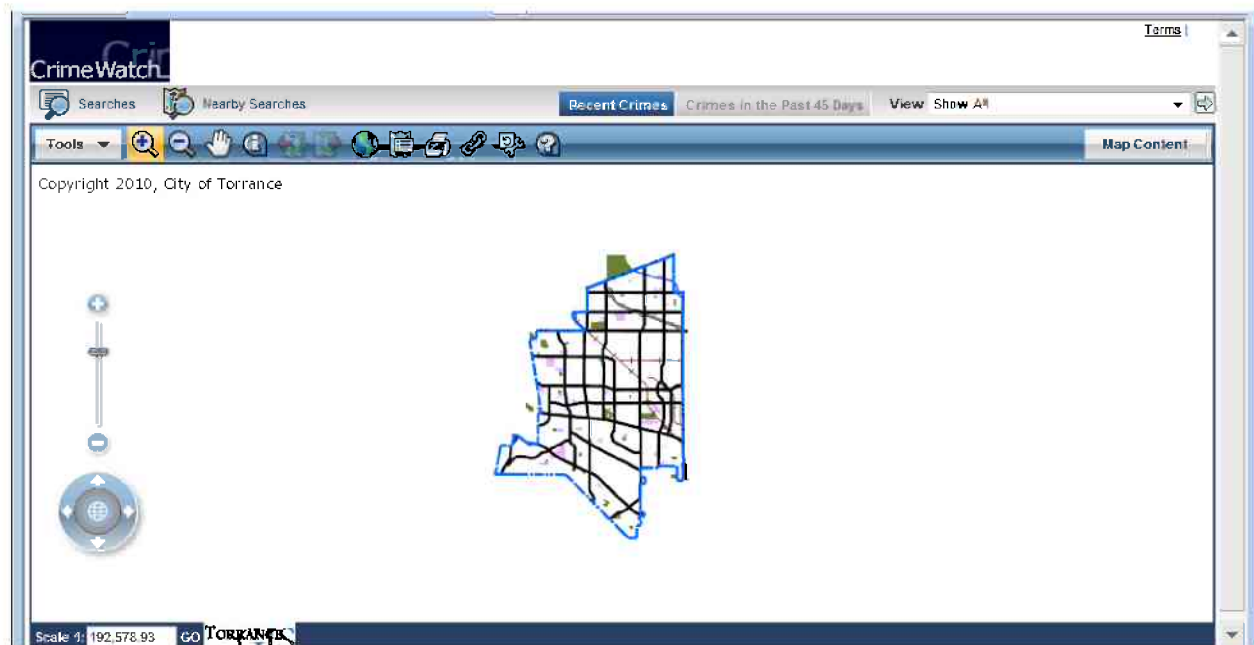
Getting Started- Quick Start Basics

The Crime Map has been set up to easily allow one to browse the map, or to find recent crimes within a certain distance of a location. In this case, a location could be an address, library, park, school or ZIP code. To browse the map, zoom into any area of the city by clicking on the map. Crime locations will automatically become visible as you zoom in. To get info on a particular crime, click on the Identify tool (looks like an “i” just above the map- see below) and then click on the crime.

More detail is given below in the section entitled “General Use of the Crime Map” to describe how to use the application. Please review the “Do’s and Don’ts” section below for quick tips on how to best use this map. There is also a Help system included in the application to further describe how to use the Crime Map’s tools and functions.

Address Search

For addresses, place your mouse pointer over the Nearby Searches near the top of the map (see below) and click on either Recent Crimes Near a Location, or Crimes in Last 45 Days Near a Location.



Using the screen below, you can select what types of crimes (leave this blank to see all crime types), and where. The example below shows how to search for all crimes within 500 feet of the intersection of Crenshaw Blvd and Artesia Blvd. You can also type in an address, such as 3031 Torrance Blvd. Note that sometimes more than one address will be found, in that case, select the one that best matches what you are looking for, then press Search again. If crimes are found within the distance you chose for that address, a red diamond will mark the address on the map, and the crimes will be selected in a list.

What's Nearby?

Please select a search:
 Recent Crimes Near a Location

Recent Crimes Near a Location

What

Crime Type

Report Number

Where

Center of Map Location

Please select a search: Address - Estimated, including intersections

Group 1

Address or Intersection
 examples: 3031 Torrance Bl, or Crenshaw Blvd & Sepulveda Blvd

Options

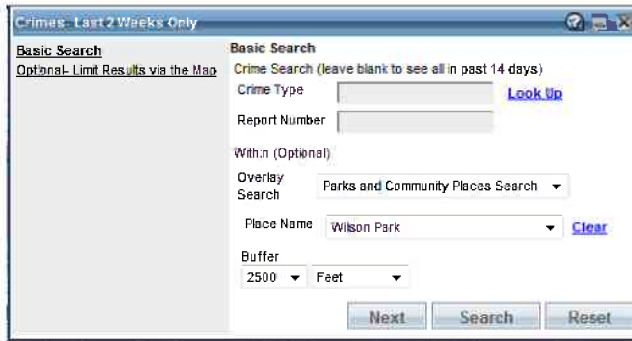
Within Radius Buffer

Find Minimum

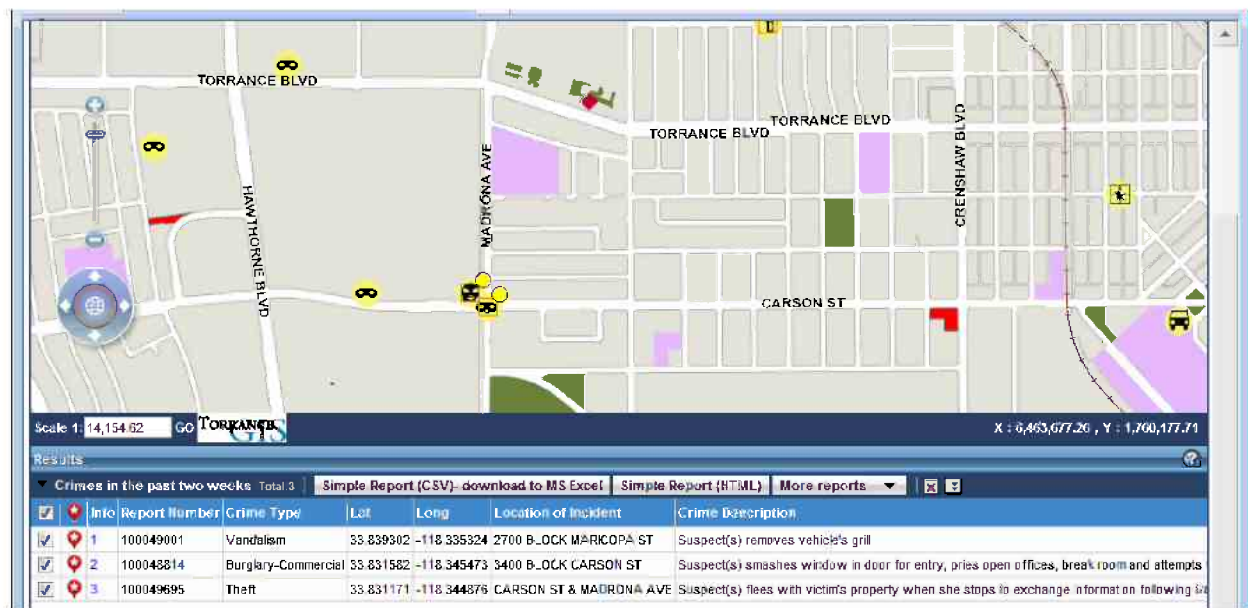
Other Locations (Parks, Schools, Homeowners Associations, ZIP Codes)

For other locations, place your mouse pointer over the Searches near the top of the map (see above) and click on either Crimes- Last 2 Weeks Only, or Crimes- 2 Weeks to 45 Days. Using the screen below, you can select what types of crimes (leave this blank to see all crime types), and where. The example

below shows how to search for all crimes in the last 2 weeks within 2500 feet of Wilson Park. Pressing the words "Look Up" will give you a list of locations so that you do not have to type in a name.



Once you see the Results window, (see image below) you can either review the map and data, or, press any of the Reports buttons to get a report that lists the selected crimes, and is ready for printing- with no map. You can also use the Print Button in the Toolbar if you'd like a map, or a map with the selected data. When you're done with the results, press the red X to the right of the More Reports button.

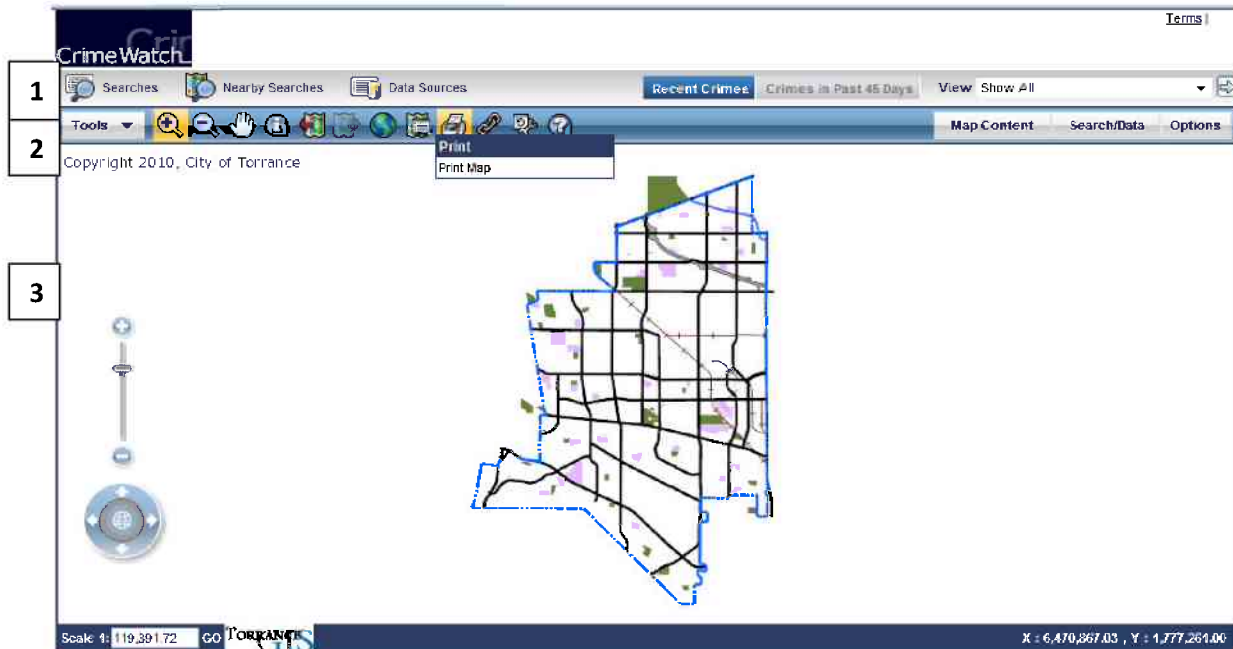


General Use of the Crime Map

There are generally 3 important areas in the window for the Crime Map (see next image below):

1. Near the top of the window are quick access to searches, two map tabs and a list for quickly zooming to certain locations in Torrance, these include parks, libraries, schools and homeowner associations.
2. Below this is the toolbar, which provides tools to use on the map or for finding information. These include Zoom and Pan tools, an Identify tool, and a Print button, among others.

3. The main part of the window is the live map, which is just below the toolbar.



Most items that you see have built-in information to help you use them. Just let your mouse pointer sit for a moment (hover) over an item, and you will get a little more info about the item. (Notice the Print button as an example in the image above.) There is also a Help button that provides generic information on how to use the map.

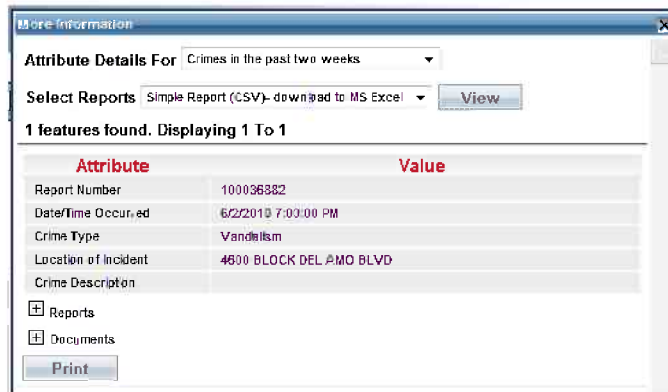
Note: Recent Crimes are those in the past 14 days, and are the only crimes shown on the Recent Crimes map tab. On the Crimes in Past 45 Days map tab, you can see both those recent crimes, and ones from the past 14 to 45 days.

Following are some brief tips for using the Crime Map, including Do's and Don'ts, Finding Information, Printing, emailing a map, and some information on web browser compatibility.

Do's and Don'ts

- **Don't** use the regular Back button with any part of this map. Instead, **Do** use the Previous Map and Next Map buttons on the toolbar next to the Identify tool.
- **Do** use the Identify tool to find info regarding something you see on the map. First, click on the Identify tool on the toolbar (generally looks like an "i"), then click on the map, on the item you'd like info about. A window will come up with the results about what was found at that location. Note that you can choose from different layers of information for your results. By default, you will see info regarding Crimes in the Past Two Weeks, however, there are other options you can select from the Attribute Details For drop-down list. (See next image below.) Selecting any of the other options will give you the info from that layer at the location where you clicked. There

will be a slight delay for that info to be shown.



- **Don't** use the regular Print button in your browser. Instead, **Do** use the Print button on the toolbar just above the map, and the Print, Report and View buttons where you see them.

Finding Information

“I just want to browse around the map”

Click on the map, hold your mouse button down and drag a rectangle. You will zoom into the rectangle you drew. If you have a scroll wheel on your mouse, you can also use it to zoom in and out. Click on the Pan tool (looks like a hand) to click and drag the map. You can also use the arrows at the bottom, left of the map to move it around.

“I want to quickly view a location such as a library, park, school or homeowner association”

Click on the View drop down list near the top, right side of the map, and then click on the name of the site or area you are interested in. Then, press the right-facing arrow directly to the right of the list. You will zoom to the item you selected. You can then use the Identify tool to click on individual crimes to find more info on them.

“I want a list of crimes within my homeowners association (HOA) area”

Go to Searches and select Crime Search. Leave the Crime Type empty to see all crimes, and then in the Overlay Search select Homeowners Association Search. Then press the Look Up link to get a list of homeowners associations, select the one you're interested in and then press Search. This will select all crimes within that HOA. You can then use the buttons to print a report or print a map.

“I want to look for recent crimes near an address”

Move your mouse over the Searches item near the top, left of the map, then click on the Address Search item. You can type in an address, or cross streets, for example: 3031 Torrance Blvd, or Torrance Blvd & Madrona Ave. Again, you can then use the Identify tool. Note that you may see more than one address location.

“I want to find info about a certain type of crime”

Move your mouse over the Searches item near the top, left of the map, then click on the Crime Search item. If you don't select any crime type, all types will be included in the search. You can

also press the Look Up button next to the field to get a list of crime types/categories. Then you can select one or more types of crimes from the list by holding down the Control/Command key as you click on each item to include in your search. Note: you must press the Clear button to go back to selecting all crime types if you have pressed Look Up and see a list of types.

Printing

To print a map or other crime info:

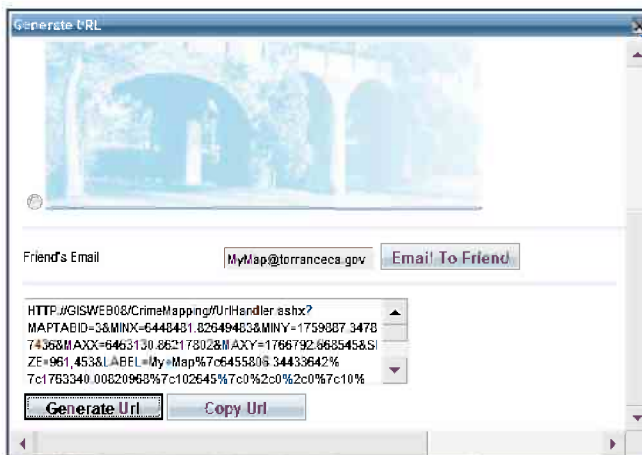
Do not use the regular print button in your browser! Use the special Print button in the toolbar just above the map. If you print a map with selections, the selected crimes will only include the crime type and generalized address on the printout.

Wherever there is a Print, Report or View button you can print all of the tabular information that is available for the selected crimes, typically without including the map. The info to be printed will come up in a new window, so make sure pop-ups are allowed for this website.

Other

Emailing a map to someone:

Zoom in to an area of the city then press the Generate URL button on the toolbar near the top, center of the window. (It looks like a short chain.) In the window that comes up, (see image below) you can type in a label to show on the map, select an image to go in the email if you'd like, and enter the person's email address to which you'd like to send this map. When it's all ready, press the Generate URL button, and then press the Email to Friend button. A window will pop up to let you know if the email was sent successfully. You can also copy the url and paste it into your own email message so you can write a note along with the link to the map.



Technical info:

The Crime Mapping application is compatible with many, but not all, browsers. It is compatible with many versions of Microsoft Internet Explorer and FireFox; and may not be compatible with some or all versions of Apple Safari, Google Chrome, Mozilla or other browsers. The operating system of a computer is also a factor influencing compatibility with this application. The City of Torrance will not provide support for compatibility of the application.