

ADDENDUM # 2

**CITY OF TORRANCE
3031 Torrance Blvd.
Torrance, CA 90503**

RFP NO. B2020-13

Bid for City of Torrance Park Exterior Lighting Retrofit

ADDENDUM # 2 - Issued 6/18/20

THE FOLLOWING CHANGES ARE HEREBY INCORPORATED INTO AND MADE A MANDATORY PART OF SUBJECT RFP:

CLARIFY: The Bid Due Date remains on **Wednesday, June 24, 2020 by 3:00 PM** in the Office of the City Clerk, 3031 Torrance Blvd., Torrance, CA 90503. **NO WALK-IN OR FAXED BIDS WILL BE ACCEPTED.**

Below are questions raised during the proposal preparation period with answers in bold.

1. The AS15 model number from ATG includes 7PIN, but the specs in the addendum doesn't include '7 PIN'. Can you clarify?

Please use ATG Electronics / AS15-40-T3-MAM-AS-00 instead of the ATG Electronics - AS15-40-V-T3-7PIN MSF-AS-00. Please see the attached specifications that correspond with the new model number. Also attached are the revised Itemized Lighting Survey and Specifications and Bidder's Proposal sheets.

CLARIFY: **Contractor is responsible in verifying voltage and the mounting upon award.**

Please return this addendum with your bid proposal.
I hereby acknowledge receipt of this addendum.

Name of Company

Address

City State Zip Code

AS Access Area Light

Outdoor

With high efficacy and precision-engineered polycarbonate lenses, the Access Area Light ensures the most energy saved with a wider smoother, and more uniform light output. The lower glare of the Access will be sure to offer improved visual comfort in parking lots and university campuses.



IP65



1-10V Dim



Toxin-Free



-40°C - 50°C
Operating



Photocell



Motion
Sensor



10
Year
Warranty

Luminaire	Access Area Light	Type
Project		
Product		
Notes		

Features

- IP65 rated and tested for use in wet locations
- Convenient modular design and knockout
- High-transmittance, prismatic acrylic lens



Order Format

Sample: AS11-50-T3

Series	Wattage	CCT	Voltage	Dimming	Optic	Finish Color
AS=Access Area Light	11=110W 15=150W 30=300W	- 40=4000K 50=5000K	- Blank=100-277V -V=347-480V	- Blank=1-10V Dimming ND=Non-Dimming	- T3= Type III	Blank=Black

Application

Multiple brackets are available for customizable mounting, improving installation time and reducing blind area of visual field. Slipfitter, arm mount, trunnion and yoke are available for the Access.

[See mounting accessories on accessory specs sheet.](#)

Construction

The Access Area Light is precision manufactured from Die-cast aluminum. The luminaire comes with a built-in occupancy sensor, following Title 24 standards.

Catalog #	Description	110W	150W	300W
MSF-AS-00	Slip Fitter for Access Area Light	x	x	x
MAM-AS-05	Square Pole Arm for Access Area Light	x	x	x
MTN-AS-00	Trunnion Mount for Access Area Light	x	x	x
MTN-AS-00	Round Pole Adapter for Access Area Light, 6 inch	x	x	x
MYK-AS-01	Yoke Mount Bracket for 110W/150W Access Area Light	x	x	
MYK-AS-01	Yoke Mount Bracket for 300W Access Area Light			x
SHD-AS-01	Shield for 110W/150W Access Area Light	x	x	
SHD-AS-02	Shield for 300W Access Area Light			x



Electrical

110W, 150W, and 320W models are available, with custom orders up to 1500W upon request. System efficacy is rated up to 170lm/W and lifespan at greater than 50,000 hours. The fixture has the standard input of 100-240/277VAC.

Optics

The Access is available in type III beam angles with type II and V available upon request. Color accuracy is rated at 70+ CRI, in a color temperature of 4000K and 5000K.

Certifications

- DLC Premium
- UL Listed
- CE
- RoHS
- Title 24
- IP65 rated

Input Voltage (VAC)	100-240/277
CRI	73+
CCT(K)	3,000 4,000 5,000 5,700
PF	.9
L70 (Hours)	50,000+
Color	Black
Housing	Die Cast Aluminum
Optic Types	T3=Type III T5=Type V
Temperature Range	-40°C to 50°C
Warranty	10 Years

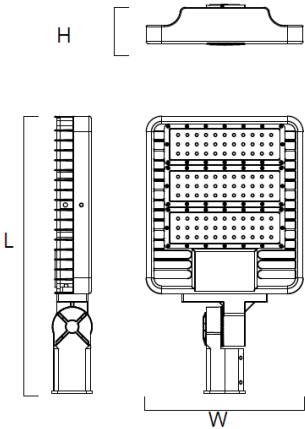
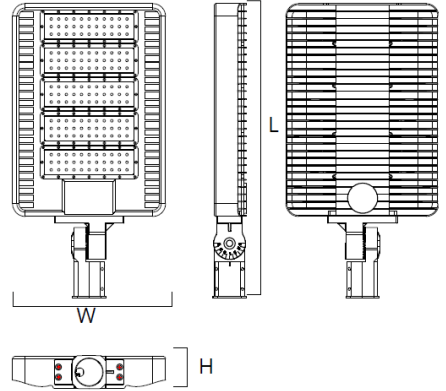
Lumen Data

Catalog Number	Wattage (W)	System Wattage	4K		5K	
			T3		T3	
			Efficacy (Lm/W)	Lumens (Lm)	Efficacy (Lm/W)	Lumens (Lm)
AS11-50-T3	110W	114.5	132	15,181	135	15,412
AS15-50-T3	150W	149.5	132	19,761	134	20,058
AS30-50-T3	300W	313.5	130	41,007	132	41,474

Catalog Number	SPD	Distribution	BUG	EPA
AS11-XX	10KV Optional	T2	B3U2G2	2.1
AS15-XX	10KV Optional	T2	B3U2G3	2.1
AS30-XX	10KV Optional	T2	B4U3G3	3.2

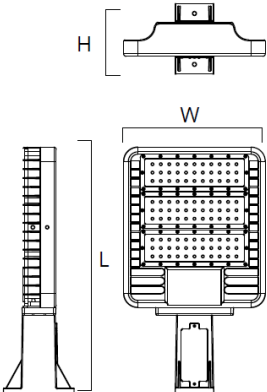
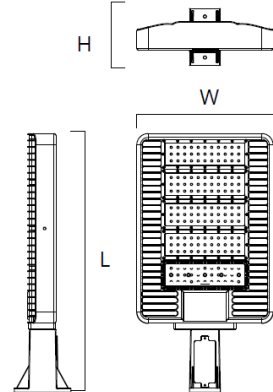
✓ Stock Item
ATG Core Product

Dimensions

Slipfitter 110W 150W				Slipfitter 300W			
							
Part No.	Length (L)	Width (W)	Height (H)	Part No.	Length (L)	Width (W)	Height (H)
AS11	20.9	11.8	3	AS30	27.2	14.2	3.1
AS15	20.9	11.8	3				

Recorded in inches

Recorded in inches

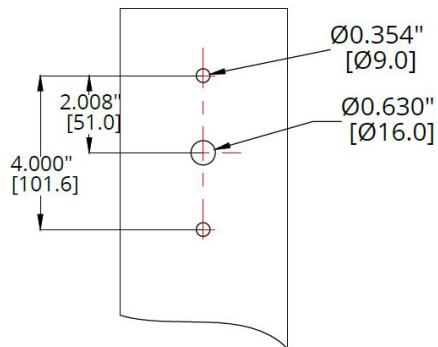
Squaremount 110W 150W				Squaremount 300W			
							
Part No.	Length (L)	Width (W)	Height (H)	Part No.	Length (L)	Width (W)	Height (H)
AS11	20.5	11.8	5.8	AS11	26.7	14.2	5.8
AS15	20.5	11.8	5.8				

Recorded in inches

Recorded in inches

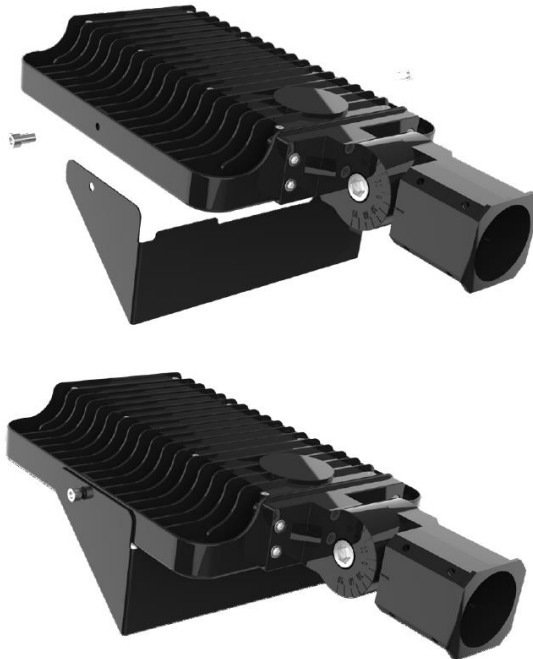
Dimensions

Drilling Detail



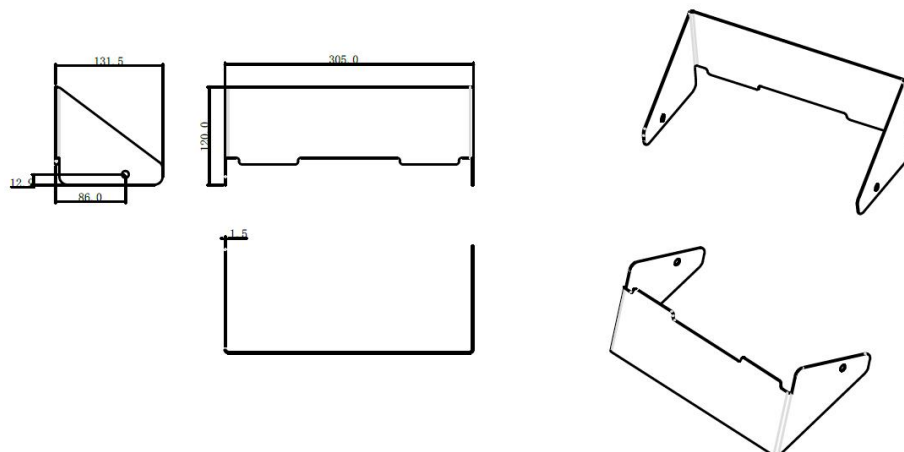
Accessories

Shield



Shield

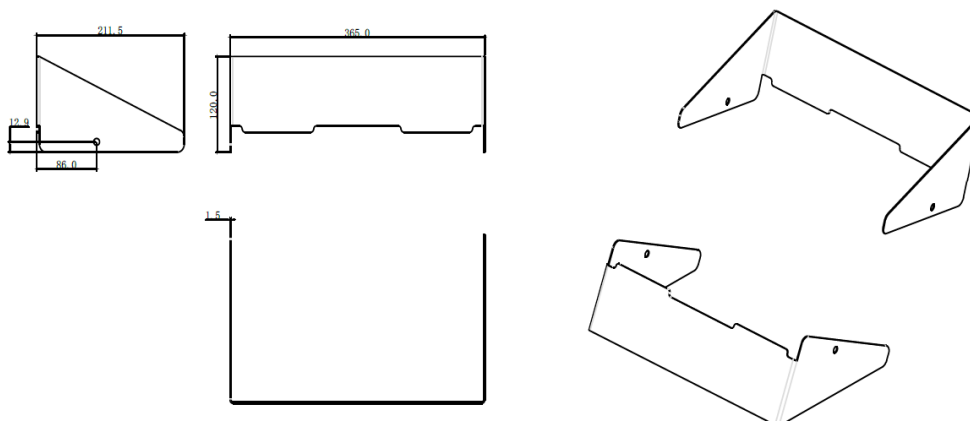
100W -300W
SHD-AS



Accessories

Shield

300W
SHD-AS



Electrical Accessories

BRI823 Digital PIR Bi- level Sensor

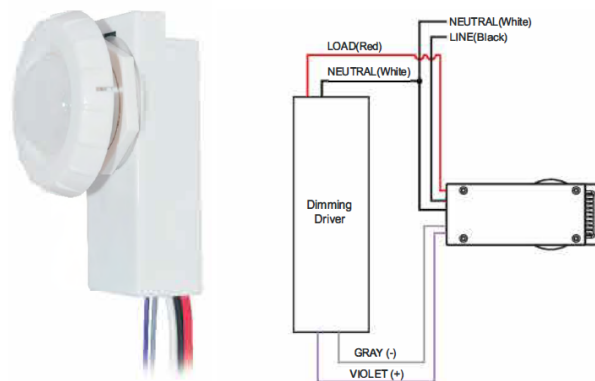


Daylight
Sensor



Motion
Sensor

[See sensor specs sheet for
more information](#)



Power Supply	120-277VAC 50/60Hz
Maximum Load -40°C-70 °C	Resistive/Tungsten - 600W@120V Ballast Electronic (LED) -800/1200VA@120/277V
Dim Control Output	0-10V, max. 25mA sinking current
Detection Radius/ Angle	30ft@40ft height/360 °
Mounting Height	Max 24ft. @LW1 Max 40ft. @LS2
Remote Range	50ft. (15m) indoor, no backlight
Humidity	Max. 95% RH
Temperature	-40 °C - +70°C

FSP-221B-D* BiLevel Sensor IP66 Rated 110-480V



Photocell



Motion
Sensor

[*See Sensor Specs sheet
for more information](#)

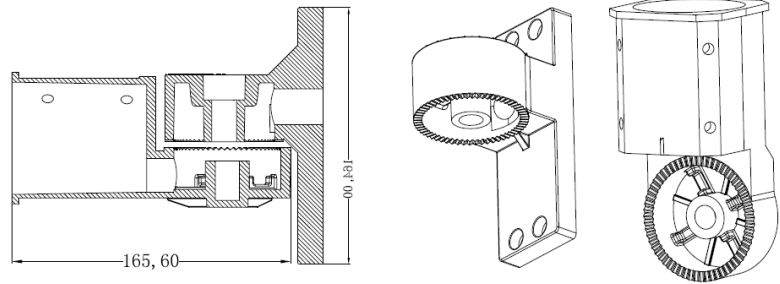


Load Ratings	@120V 0-800W tungsten, ballast, LED driver; 1/6hp motor @230-240V 0-300W ballast, LED driver @277V 0-1200W ballast, LED driver; 1/6hp motor @347/480V 0-1200W ballast, LED driver
0-10V Sinking Current	50mA
High/Low Modes	high:0-10V, low: off, 0-9.8V
Time Delay	30 sec, 1-30 min
Cut Off Delay	none, 1-59 minutes, 1-5 hours
Sensitivity/Service mode	low, med, max: on-fix, off-fix
Setpoints	hold off setpoint: none, 1-250 fc, auto photocell on/off setpoint: 1-250fc
Ramp and Fade Times	1-60 sec
Op Temperature	-40°F to +167°F (-40°C to +75°C)

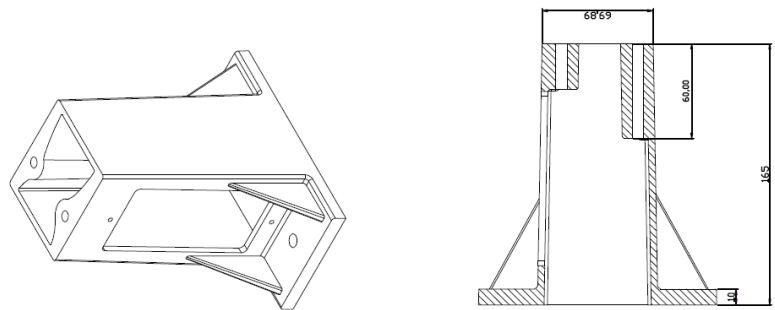
Mounting

[See mounting accessories on accessory specs sheet.](#)

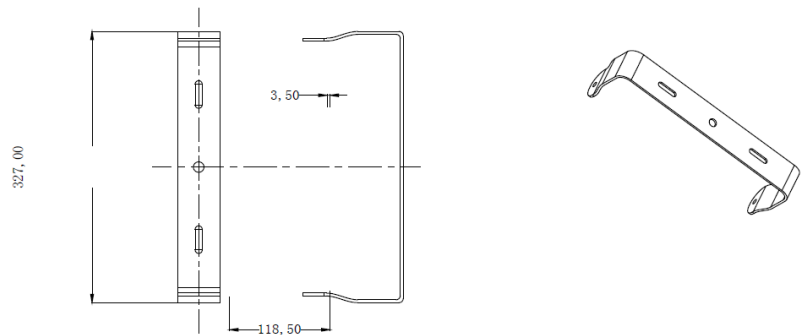
Slipfitter
MSF-AS-00



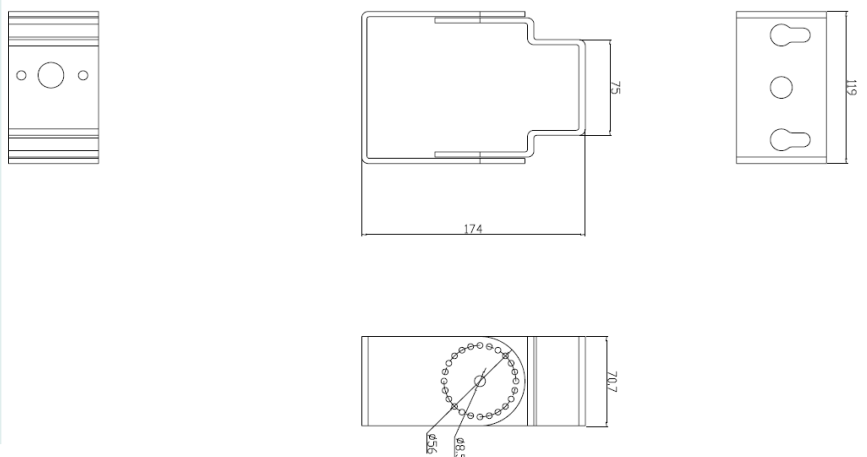
Square Mount
MAM-AS-05



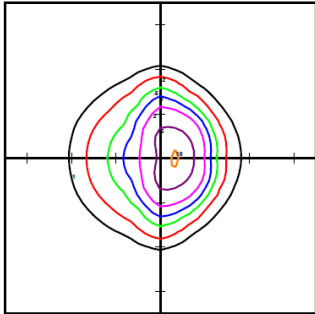
Yoke Mount
MYK-AS-01



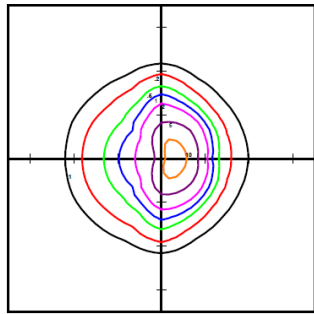
Trunnion Mount
MTN-AS-00



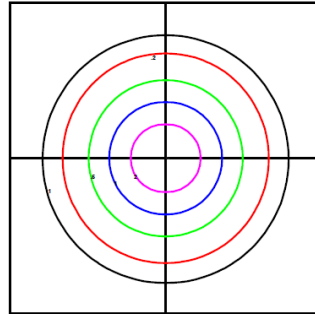
Photometric



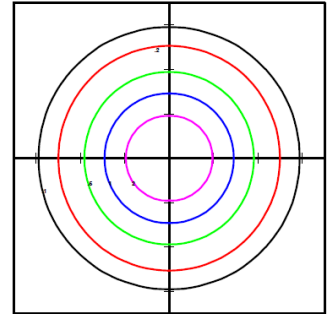
AS11-50-T3 @25'



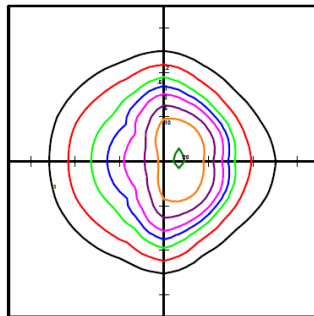
AS15-50-T3 @25'



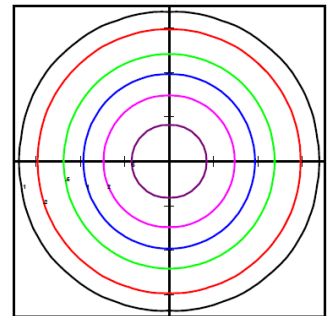
AS11-50-T5 @25'



AS15-50-T5 @25'



AS30-50-T3 @25'



AS30-50-T5 @25'

10 Year Warranty

ATG Electronics®
Industry Leading 10 Year Limited Warranty
For North American LED Lighting Fixtures

ATG Electronics warrants to the original purchaser of ATG Electronics Domestic LED products listed above that were manufactured for which the ATG Electronics Spec Sheet located on our website contains the words "10 year limited warranty" that, subject to the below terms and conditions of this warranty, when such LED products are properly installed they will comply with ATG Electronics published product specifications for such products and will be free from material defects in material and workmanship for a period of ten (10) years from the date of sale by ATG Electronics, or, if lesser, 50,000 hours of operation (at an average of 13.6 hours per day operation). The LED arrays in the Product(s) will be considered defective in material or workmanship only if a total of 15% or more of the individual light emitting diodes in the Product(s) fail to illuminate.

The above express limited warranty is extended by ATG Electronics® only to the original or first end-user purchaser and only for the original installed location. This warranty only applies to products purchased after June 1, 2017. This warranty is non-transferrable, whether by assignment or operation of law. The original purchaser must provide warranty claims to ATG Electronics within the warranty period promptly upon discovery and in accordance with ATG Electronics Return and Repair Procedures as outlined within this document.

Should any defects be found by ATG Electronics upon its inspection of the properly returned product, ATG Electronics sole responsibility and liability under this warranty will be, at its option, to either repair or replace the defective part or parts or else make available a new replacement unit that will provide equal or better performance. All decisions regarding the existence or non-existence of defects or otherwise affecting the warranty shall be made by ATG ELECTRONICS and shall be final and binding on all parties. Where a defective LED product is replaced under this warranty, the balance of the original warranty period shall remain effective.

Conditions and Exclusions

This warranty is conditioned upon proper installation, use and maintenance. This warranty will automatically become null and void and shall not be applicable to any LED fixture which (i) has not been timely paid for, (ii) is not installed and operated in accordance with the current edition of The National Electric Code (NEC), the Standards for Safety of Underwriters' Laboratory, Inc. (UL) or with ATG Electronics instructions and guidelines, (iii) has been moved from its original installation, (iv) has been installed within an area that has exposure to sulfur or any area with high acidic compounds in use, (v) has been operated in an ambient temperature or humidity that is higher than 35 degrees Celsius, (vi) has been subjected to a lightning strike, power surge or overvoltage condition, (vii) has its LED Board subjected to static electricity due to failure to discharge same prior to connecting or disconnecting the lead from the LED board, (viii) was not installed and/or operated in accordance with ATG Electronics instructions and guidelines, (ix) has been mishandled, misused, abused, tampered with, modified or altered by anyone other than ATG ELECTRONICS, (x) has been subjected to abnormal stresses and operating conditions, or (xi) has been operated without overvoltage and lightning protection devices in place.

Limitations

Disclaimers & Limitations of Liability

The foregoing warranty is exclusive of all other statutory, written or oral warranties and no other warranties of any kind, statutory, by operation of law or course of performance, or otherwise, are given, herein expressed or otherwise received. EXCEPT AS EXPRESSLY PROVIDED ABOVE, ATG ELECTRONICS DISCLAIMS ALL REPRESENTATIONS, WARRANTIES AND CONDITIONS OF ANY KIND, EXPRESS OR IMPLIED, REGARDING THE LED PRODUCTS AND ITS SERVICES, INCLUDING, WITHOUT LIMITATION, THE IMPLIED WARRANTIES OF MERCHANTABILITY AND FITNESS FOR A PARTICULAR USE OR PURPOSE.

LIMITATION OF LIABILITY. Other than the obligation to repair or replace as provided above, ATG Electronics shall have no liability for any losses, expenses or damages as a result of the installation, use, inability to use, removal or replacement of any LED product. ATG Electronics will not under any circumstances whether as a result of breach of contract, breach of warranty, tort, strict liability or otherwise be liable for consequential, incidental, special or exemplary damages including but not limited to, loss of profits or revenues, loss of any other goods or associated equipment or damage to any associated equipment, cost of capital, cost of substitute products, facilities or services, down time cost or claims of claimant's customers. ATG Electronics liability on any claim of any kind for any loss or damages arising out of, resulting from or concerning any LED product, any aspect of this warranty or for any products or services furnished hereunder shall not exceed the price of the fixture which gives rise to the claim.

Return and Repair Procedures

All warranty requests and or questions are to be directed to ATG Electronics Customer Service Department (CSD) at 888-618-7298. If deemed necessary, the CSD will issue a Returned Merchandise Authorization (RMA) number which must be included on both the packing slip of the component or fixture being returned and on the outside of the box. You must include your name and contact information, including your email address, on the packing slip so that we can contact you easily. Each component or fixture must be packaged very carefully and properly so as to prevent damages in shipment and must be shipped freight prepaid. Please obtain a proof of delivery to ensure that the material is received.

Once the component or fixture has been received and tested, an evaluation report will be provided to the end user via email. This report will clarify the following:

- A) The component / fixture is covered under the warranty policy and will either be repaired or replaced.
- B) The component / fixture is not covered under the warranty policy and the reason for this determination.

If ATG ELECTRONICS determines that the component or fixture is covered under the warranty, then the appropriate repairs will be started or a replacement fixture will be manufactured and shipped. Please note that in the event the returned component or fixture is found not to be covered under this warranty, you may be subject to a labor charge for the evaluation process and will be responsible for all return shipping charges and fees. For components and fixtures determined to be covered under this warranty prior to the first anniversary of the Sale Date, the repaired or replacement component or fixture will be returned to you at no charge. You will be responsible for all other shipping charges.

No Labor Reimbursement

All components and fixtures determined to be covered by this warranty as provided above, will be repaired or replaced at no charge to the customer, however, except as expressly provided above with respect to recessed and linear fixtures during the first year, the customer must hire and pay for an electrician to remove and reinstall such components and fixtures. No labor costs will be covered for the removal or reinstallation of any components or fixtures. The warranty does not cover modifications, repairs or replacements, or the related labor or materials costs, that may be necessary to facilities or third party products in connection with the removal, repair, or replacement of any LED product under this warranty.

ITEMIZED LIGHTING SURVEY AND SPECIFICATIONS

Park Name	Area	Existing Fixture Type	SCE Solution Code	Replacement Description	Qty.	Existing Lamp Type	Proposed Operating Hours	Proposed Manuf.	Proposed M/N
Delthorne	Pump House	Wallpack	LT-96754	Exterior HPS to LED	2	HPS 70	4100	ATG Electronics	WPDS-28-40-G3 / FULL CUTOFF
Delthorne	Restroom	Surface mount	LT-96754	Exterior MH to LED	4	MH 175	4100	RAB	VANLED40
Delthorne	Basketball court	Flood Double fixture	LT-85834	Exterior MH to LED	4	MH 400	1250	ATG Electronics	AS15-40-T3-MAM-AS-00
Delthorne	Parking lot	Flood Double fixture	LT-19132	Exterior MH to LED	2	MH 250	3485	Maxlite	AR100UT3-40BA
Delthorne	Park area	Flood Double fixture	LT-19132	Exterior MH to LED	2	MH 250	3485	Maxlite	AR100UT3-40BA
Delthorne	Park area	Flood Triple fixture	LT-19132	Exterior MH to LED	3	MH 250	3485	Maxlite	AR100UT3-40BA
Delthorne	Pathway	Flood	LT-19132	Exterior MH to LED	1	MH 250	3485	Maxlite	AR100UT3-40BA
Delthorne	Pathway	Shoebox	LT-19132	Exterior MH to LED	15	MH 250	3485	Maxlite	AR100UT3-40BA
El Nido	Parking lot	Area lighter	LT-19132	Exterior MH to LED	5	MH 250	4100	Maxlite	AR100UT3-40BA
El Nido	Parking lot	Area lighter	LT-19132	Exterior MH to LED	2	MH 250	4100	Maxlite	AR100UT3-40BA
El Retiro	Table area	Wallpacks	LT-96754	Exterior MH to LED	2	MH 175	4100	ATG Electronics	WPDS-60-40-G3
El Retiro	Building exterior	Surface mount	LT-96754	Exterior MH to LED	6	MH 175	4100	RAB	WP1LED30N
El Retiro	Building exterior	Wallpacks	LT-96754	Exterior MH to LED	3	MH 175	4100	ATG Electronics	WPDS-40-40-G3
El Retiro	Tennis court	Flood	LT-85834	Exterior MH to LED	12	MH 400	1250	ATG Electronics	AS15-40-T3-MAM-AS-00
El Retiro	Pathway	Pumpkin head	LT-19132	Exterior MH to LED	1	HPS 200	3485	RAB	ALED5T78N
El Retiro	Parking lot	Flood	LT-19132	Exterior MH to LED	8	MH 400	3485	ATG Electronics	AS15-40-T3-MAM-AS-00
Hickory	Restroom	Surface mount	LT-96754	Exterior MH to LED	6	MH 175	4100	RAB	VANLED40
La Carretara	Basketball court	Flood	LT-85834	Exterior MH to LED	4	MH 400	3485	ATG Electronics	AS15-40-T3-MAM-AS-00
La Carretara	Park area	Flood	LT-19132	Exterior MH to LED	2	MH 250	3485	Maxlite	AR100UT3-40BA
La Carretara	Park area	Shoebox	LT-19132	Exterior MH to LED	3	MH 250	3485	Maxlite	AR100UT3-40BA
La Romeria	Tennis court	Flood	LT-85834	Exterior MH to LED	6	MH 1000	800	Maxlite	AR280UT3-40BA
La Romeria	Basketball court	Flood	LT-85834	Exterior MH to LED	2	MH 175	800	Maxlite	AR100UT3-40BA
La Romeria	Basketball court	Flood	LT-85834	Exterior MH to LED	6	MH 1000	800	Maxlite	AR280UT3-40BA
La Romeria	Rec building	Flood	LT-96754	Exterior MH to LED	1	MH 175	4000	Maxlite	AR100UT3-40BA
La Romeria	Rec building	Surface mount	LT-96754	Exterior MH to LED	3	MH 175	4000	RAB	VANLED40
Lago Seco	Restroom	wallpack	LT-96754	Exterior HPS to LED	2	MH 250	3800	ATG Electronics	WPDS-40-40-G3
Lago Seco	Restroom	wallpack	LT-96754	Exterior MH to LED	1	MH 175	3800	ATG Electronics	WPDS-40-40-G3
Osage	Parking lot	flood	LT-19132	Exterior MH to LED	2	MH 250	1600	Maxlite	AR100UT3-40BA
Paradise	Rec building	Surface mount	LT-96754	Exterior MH to LED	3	MH 175	4000	RAB	VANLED40
Paradise	Tennis courts	Shoebox	LT-85834	Exterior MH to LED	16	MH 1000	1150	ATG Electronics	AS15-40-T3-MAM-AS-00

ITEMIZED LIGHTING SURVEY AND SPECIFICATIONS

Park Name	Area	Existing Fixture Type	SCE Solution Code	Replacement Description	Qty.	Existing Lamp Type	Proposed Operating Hours	Proposed Manuf.	Proposed M/N
Pequeno	Park area	Pumpkin head	LT-19132	Exterior MH to LED	1	MH 150	3485	RAB	ALED5T78N
Pequeno	Park area	Area lighter	LT-19132	Exterior MH to LED	1	HPS 200	3485	Maxlite	AR100UT3-40BA
Pueblo	Table area	Surface mount	LT-96754	Exterior MH to LED	8	MH 50	1250	RAB	VANLED20
Pueblo	Basketball court	Flood	LT-19132	Exterior MH to LED	2	MH 175	1250	Maxlite	AR100UT3-40BA
Pueblo	Basketball court	Flood	LT-19132	Exterior MH to LED	2	MH 400	1250	ATG Electronics	AS15-40-T3-MAM-AS-00
Sea-Aire	Park area	Flood	LT-19132	Exterior HPS to LED	3	HPS 400	3485	ATG Electronics	AS15-40-T3-MAM-AS-00
Sunnyglen	Park area	Shoebox	LT-19132	Exterior MH to LED	3	MH 250	3485	Maxlite	AR100UT3-40BA
Sunnyglen	Park area	Pumpkin heads	LT-19132	Exterior MH to LED	10	HPS 200	3485	RAB	ALED5T78N
Sur La Brea	Park area	Flood	LT-19132	Exterior MH to LED	3	MH 400	3485	ATG Electronics	AS15-40-T3-MAM-AS-00
Sur La Brea	Restroom	Wallpacks	LT-96754	Exterior MH to LED	4	MH 175	4000	ATG Electronics	WPDS-60-40-G3
Sur La Brea	Tennis courts	Flood	LT-85834	Exterior MH to LED	18	MH 400	2100	ATG Electronics	AS15-40-T3-MAM-AS-00
Sur La Brea	Basketball court	Flood	LT-85834	Exterior HPS to LED	4	MH 400	1250	ATG Electronics	AS15-40-T3-MAM-AS-00
Sur La Brea	Rec building	Surface mount	LT-96754	Exterior MH to LED	10	MH50	4000	RAB	VANLED20
Sur La Brea	Pathway	Pumpkin heads	LT-19132	Exterior MH to LED	15	HPS 200	3485	RAB	ALED5T78N
Victor	Outdoor kitchen area	wallpacks	LT-96754	Exterior MH to LED	1	MH 175	4000	ATG Electronics	WPDS-60-40-G3
Victor	Parking Lot	Area Lighter	LT-19132	Exterior MH to LED	2	HPS 200	4000	Maxlite	AR100UT3-40BA
Victor	Pathway	Pumpkin head	LT-19132	Exterior HPS to LED	12	HPS 200	3485	RAB	ALED5T78N
Walteria	Ball field	flood	LT-85834	Exterior MH to LED	4	MH 400	4000	ATG Electronics	AS15-40-T3-MAM-AS-00
Walteria	Table area	surface mount	LT-96754	Exterior MH to LED	4	MH 175	4000	RAB	VANLED20

BIDDER'S PROPOSAL**BID FOR CITY OF TORRANCE PARK EXTERIOR LIGHTING RETROFIT
B2020-13**

In accordance with the Notice Inviting Bids pertaining to the receiving of sealed proposals by the City Clerk of the City of Torrance for the above titled improvement, the undersigned hereby proposes to furnish all work to be performed in accordance with the Contract Documents, prepared by the City of Torrance for the bid as set forth in the following schedules.

Assignment of Contractor's values:

Item	Park Location	# Units	Existing Fixture/Lamp Type	Proposed Fixture Manufacturer/Catalog #	Total Amount In Figures
01	Delthorne Park - 3401 Spencer St, Torrance 90503	33	(2) Wallpack – HPS70 (4) Surface mount - MH 175 (4) Flood double fixture – MH 400 (4) Flood double fixture – MH 250 (3) Flood triple fixture – MH 250 (1) Flood – MH 250 (15) Shoebox – MH 250	(2) ATG Electronics / WPDS-28-40-G3 / FULL CUTOFF (4) RAB / VANLED40 (4) ATG Electronics / AS15-40-T3-MAM-AS-00 (23) Maxlite / AR100UT3-40BA	\$
02	El Nido Park - 18301 Kingsdale Ave, Redondo Beach, CA 90278	7	(7) Area lighter – MH 250	(7) Maxlite / AR100UT3-40BA	\$
03	El Retiro Park - 126 Vista Del Parque, Redondo Beach, CA 90277	32	(2) Wallpack table area – MH 175 (3) Wallpack building exterior (6) Surface mount – MH 175 (20) Flood – MH 400 (1) Pumpkin head – HPS 200	(2) ATG Electronics / WPDS-60-40-G3 (3) ATG Electronics / WPDS-40-40-G3 (6) RAB / WP1LED30N (20) ATG Electronics / AS15-40-T3-MAM-AS-00 (1) RAB / ALED5T78N	\$
04	Hickory Park - 2850 W 232nd St, Torrance, CA 90505	6	(6) Surface mount – MH 175	(6) RAB / VANLED40	\$
05	La Carretara Park - 2040 186th St, Torrance, CA 90504	9	(4) Flood – MH 400 (2) Flood – MH 250 (3) Shoebox – MH 250	(4) ATG Electronics / AS15-40-T3-MAM-AS-00 (5) Maxlite / AR100UT3-40BA	\$
06	La Romeria Park - 19501 S Inglewood Ave, Torrance, CA 90503	18	(3) Flood – MH 175 (12) Flood – MH 1000 (3) Surface mount – MH 175	(3) Maxlite / AR100UT3-40BA (12) Maxlite / AR280UT3-40BA (3) RAB / VANLED40	\$
07	Lago Seco Park - 3920 W 235th St, Torrance, CA 90505	3	(2) Wallpack – MH 250 (1) Wallpack – MH 175	(3) ATG Electronics / WPDS-40-40-G3	\$

BIDDER'S PROPOSAL – Continued

Item	Park Location	# Units	Existing Fixture/Lamp Type	Proposed Fixture Manufacturer/Catalog #	Total Amount In Figures
08	Osage Park - 17002 Osage Ave, Torrance, CA 90504	2	(2) Flood – MH 250	(2) Maxlite / AR100UT3-40BA	\$
09	Paradise Park - 5006 Lee St, Torrance, CA 90503	19	(3) Surface mount – MH 175 (16) Shoebox – MH 1000	(3) RAB / VANLED40 (16) ATG Electronics / AS15-40-T3-MAM-AS-00	\$
10	Pequeno Park - 180th St & Regina Ave, Torrance, CA 90504	2	(1) Pumpkin head – MH 150 (1) Area lighter – HPS 200	(1) RAB / ALED5T78N (1) Maxlite / AR100UT3-40BA	\$
11	Pueblo Park - 2252 Del Amo Blvd Torrance, CA 90501	12	(8) Surface mount – MH 50 (2) Flood – MH 175 (2) Flood – MH 400	(8) RAB / VANLED20 (2) Maxlite / AR100UT3-40BA (2) ATG Electronics / AS15-40-T3-MAM-AS-00	\$
12	Sea-Aire Park - 22730 Lupine Dr, Torrance 90505	3	(3) Flood – HPS 400	(3) ATG Electronics / AS15-40-T3-MAM-AS-00	\$
13	Sunnyglen Park - 5525 Del Amo Blvd, Torrance, CA 90503	13	(3) Shoebox – MH 250 (10) Pumpkin heads – HPS 200	(3) Maxlite / AR100UT3-40BA (10) RAB / ALED5T78N	\$
14	Sur La Brea Park - 1951 W 237th St, Torrance 90501	52	(25) Flood – MH 400 (2) Wallpacks – MH175 (10) Surface mount – MH 50 (15) Pumpkin heads – HPS 200	(25) ATG Electronics / AS15-40-T3-MAM-AS-00 (2) ATG Electronics / WPDS-60-40-G3 (10) RAB / VANLED20 (15) RAB / ALED5T78N	\$
15	Victor Park - 4727 Emerald St, Torrance, CA 90503	15	(1) Wallpack – MH 175 (12) Pumpkin head – HPS 200 (2) Area Lighter – HPS 200	(1) ATG Electronics / WPDS-60-40-G3 (12) RAB / ALED5T78N (2) Maxlite / AR100UT3-40BA	\$
16	Walteria Park - 3855 W 242nd St, Torrance, CA 90505	8	(4) Flood – MH 400 (4) Surface mount – MH 175	(4) ATG Electronics / AS15-40-T3-MAM-AS-00 (4) RAB / VANLED20	\$
B2020-13 – BID TOTAL – in figures*				\$	

Bidders Proposal – B2020-13

BASE BID TOTAL: _____
(In Words)*

BIDDER’S PROPOSAL – Continued

Bidders may bid on all or part of these requirements as indicated on the price proposal. The City may award one or more contracts for these items to the lowest responsible bidder of each item or group of items. The City may award to one vendor if doing so is in the best interest of the City.

***BID MAY BE REJECTED IF TOTAL IS NOT SHOWN IN FIGURES AND WORDS.**

The City of Torrance awards to the lowest responsible bidder per the Torrance Municipal Code. Based on the funding available, the City reserves the right to select any combination of roofs to proceed with replacement to determine the lowest responsible bidder for award.

The undersigned furthermore agrees to enter into and execute a contract, with necessary bonds, at the prices set forth herein and in case of default in executing such contract, with necessary bonds, the check or bond accompanying this bid and the money payable thereon shall be forfeited thereby to and remain the property of the City of Torrance.

The above prices include all work appurtenant to the various items as outlined in the project plans and specifications and all work or expense required for the satisfactory completion of said item.

The undersigned declares that it has carefully examined the Specifications, Plans and Contract Documents, and has investigated the site of the work and is familiar with the conditions thereon.

Company Name

Signature of principal in company

Date

Name and Title of Signer

Address: _____ Phone: _____

Fax: _____ Email: _____

Public Works Registration (PWCR) Number: _____

License No. & Classifications _____