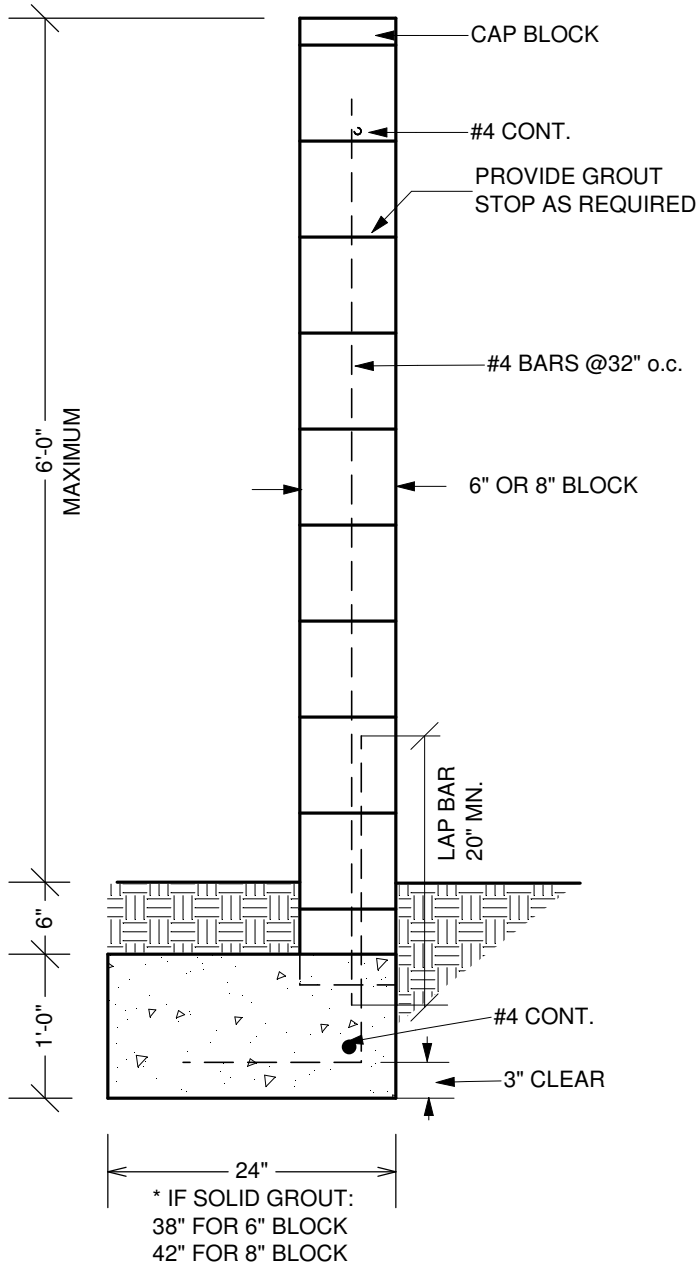


# BLOCK WALL

(ALL ON ONE PROPERTY - NOT SHARED)

7-A



## DESIGN CRITERIA:

WIND LOAD = 15 psf  
SOIL BEARING - 1000 psf

## CONSTRUCTION NOTES:

1. MIN. CONCRETE COMPRESSIVE STRENGTH  $f_c = 1,000$  psi @ 28 DAYS.
2. ALL FOOTING CONCRETE TO BE PLACED AGAINST UNDISTURBED EARTH.
3. GROUT: 1 PART PORTLAND CEMENT AND 3 PARTS SAND.
4. MASONRY UNITS SHALL BE GRADE 'N' UNITS.
5. MORTAR: 1 PART CEMENT, 1/4 PART LIME PUTTY AND 3-1/2 PARTS SAND.
6. REINFORCING STEEL SHALL CONFORM TO ASTM SPEC. A615
7. \*\*SOLID GROUT OPTION\*\*  
6" BLOCK USE 38" FOOTING WIDTH  
8" BLOCK USE 42" FOOTING WIDTH

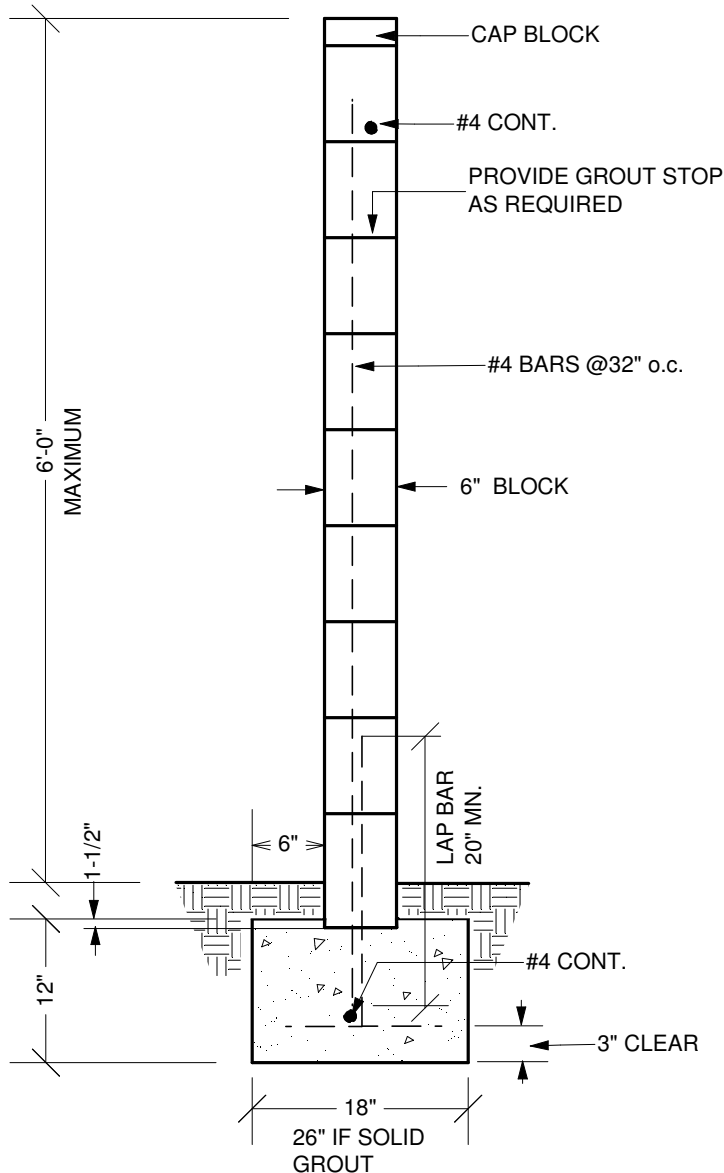
CITY OF TORRANCE  
DEPARTMENT OF BUILDING & SAFETY

REVISED 1/04

# BLOCK WALL

(BUILT ON PROPERTY LINE - SHARED)

7-B



## DESIGN CRITERIA:

WIND LOAD = 15 psf  
SOIL BEARING - 1000 psf

## CONSTRUCTION NOTES:

1. MIN. CONCRETE COMPRESSIVE STRENGTH  $f'_c = 1,000$  psi @ 28 DAYS.
2. ALL FOOTING CONCRETE TO BE PLACED AGAINST UNDISTURBED EARTH.
3. GROUT: 1 PART PORTLAND CEMENT AND 3 PARTS SAND.
4. MASONRY UNITS SHALL BE GRADE 'N' UNITS.
5. MORTAR: 1 PART CEMENT, 1/4 PART LIME PUTTY AND 3-1/2 PARTS SAND.
6. REINFORCING STEEL SHALL CONFORM TO ASTM SPEC. A615
7. \*\* FOR SOLID GROUT WALL FOOTING SHALL BE 12" x 26".

CITY OF TORRANCE  
DEPARTMENT OF BUILDING & SAFETY

REVISED 1/04