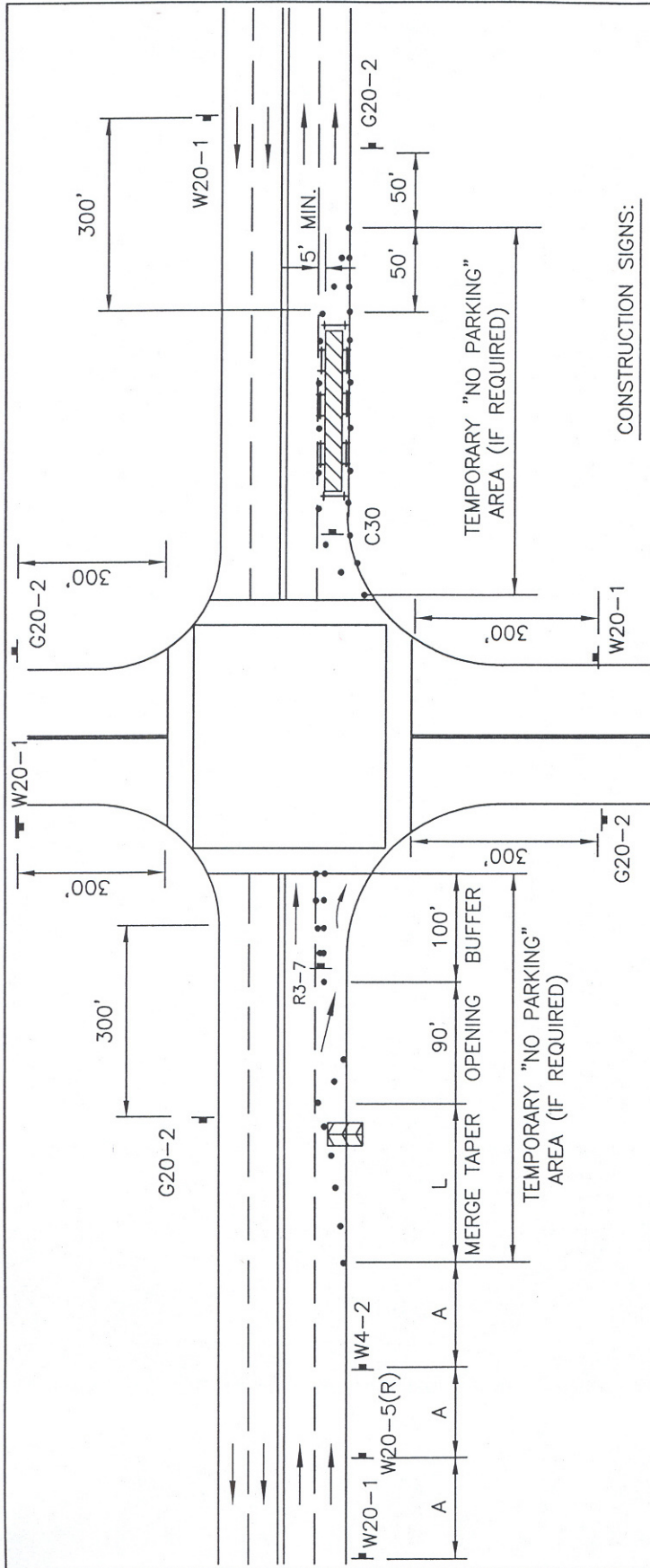


TT/T1011



CONSTRUCTION SIGNS:

- W20-1 ROAD WORK AHEAD
- W20-5(R): RIGHT LANE CLOSED AHEAD
- W4-2 : LANE END (SYMBOL)
- G20-2 : END ROAD WORK (OPTIONAL)
- R3-7: RIGHT LANE MUST TURN RIGHT
- C30: LANE CLOSED

DESIGN SPEED	MERGE TAPER LENGTH (L)	DELINEATOR SPACING		DISTANCE BETWEEN SIGNS (A)
		(TAPER)	(TANGENT)	
30 MPH	180 FT.	30 FT.	60 FT.	100 FT.
35 MPH	245 FT.	35 FT.	70 FT.	100 FT.
40 MPH	320 FT.	40 FT.	80 FT.	100 FT.
45 MPH	540 FT.	45 FT.	90 FT.	350 FT.
50 MPH	600 FT.	50 FT.	100 FT.	350 FT.

NOTE: MERGE TAPER LENGTH WAS CALCULATED BASED ON 12-FOOT WIDE LANES.

LEGEND:

- TRAFFIC DRUM OR 36" POST TUBE DELINEATOR
- SIGN WITH FLAG TREE
- FLASHING LEFT ARROW
- WORK AREA
- BARRICADE (FOR EXCAVATION ONLY)
- TRAFFIC DIRECTION

CITY OF TORRANCE - WORK AREA TRAFFIC CONTROL

DATE ISSUED
1 SEP 2009

RIGHT LANE CLOSURE FOR WORK BEYOND INTERSECTION

ROBERT J. BESTE
PUBLIC WORKS DIRECTOR
R.C.E. NO. 50737

STANDARD NO.
T1011
SHEET 1 OF 1