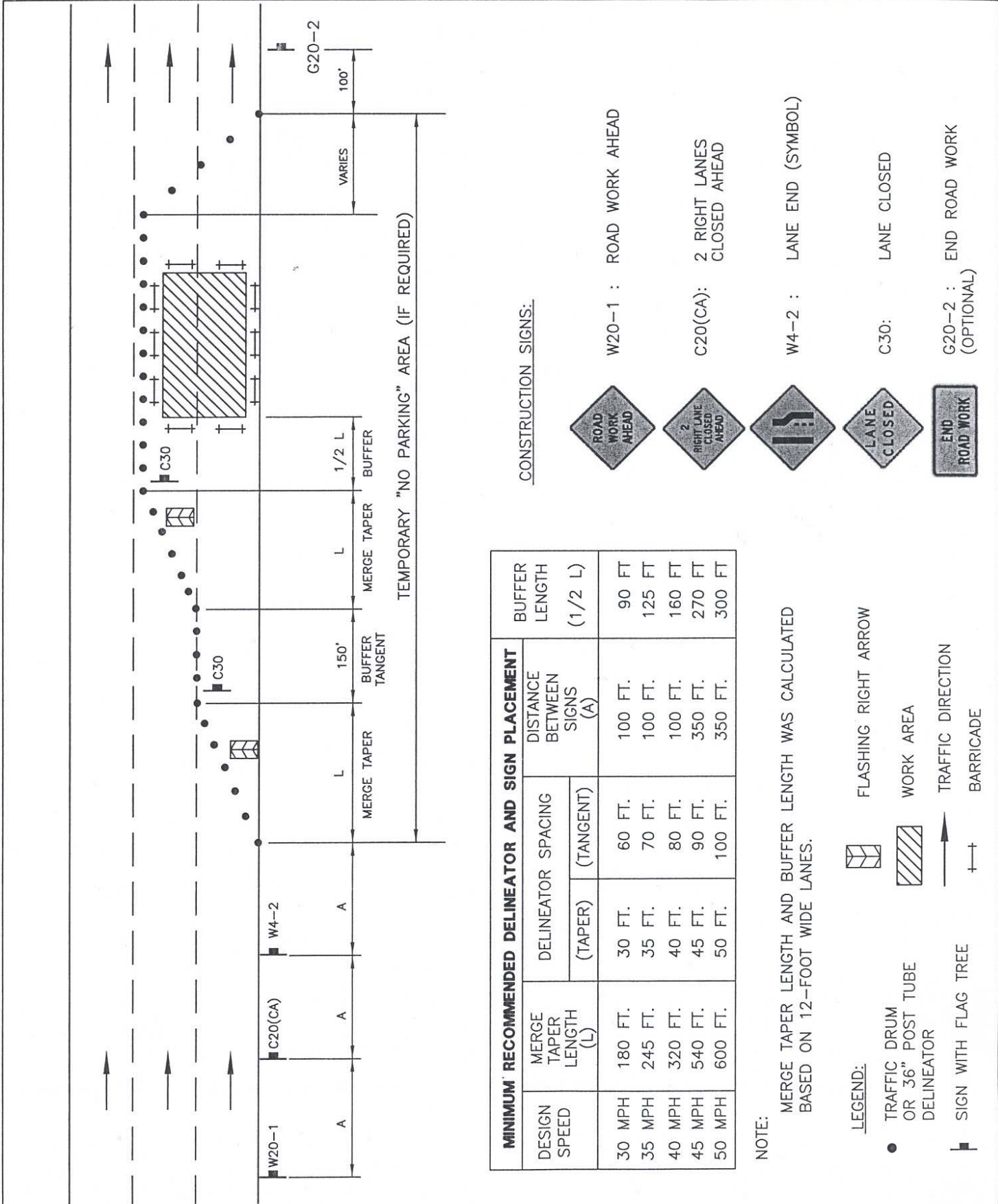


TT/T1008



MINIMUM RECOMMENDED DELINEATOR AND SIGN PLACEMENT					
DESIGN SPEED	MERGE TAPER LENGTH (L)	DELINEATOR SPACING		DISTANCE BETWEEN SIGNS (A)	BUFFER LENGTH (1/2 L)
		(TAPER)	(TANGENT)		
30 MPH	180 FT.	30 FT.	60 FT.	100 FT.	90 FT.
35 MPH	245 FT.	35 FT.	70 FT.	100 FT.	125 FT.
40 MPH	320 FT.	40 FT.	80 FT.	100 FT.	160 FT.
45 MPH	540 FT.	45 FT.	90 FT.	350 FT.	270 FT.
50 MPH	600 FT.	50 FT.	100 FT.	350 FT.	300 FT.

CONSTRUCTION SIGNS:

- W20-1 : ROAD WORK AHEAD
- W20-1:1 : ROAD WORK AHEAD
- C20(CA): 2 RIGHT LANES CLOSED AHEAD
- W4-2 : LANE END (SYMBOL)
- C30: LANE CLOSED
- G20-2 : END ROAD WORK (OPTIONAL)

NOTE: MERGE TAPER LENGTH AND BUFFER LENGTH WAS CALCULATED BASED ON 12-FOOT WIDE LANES.

- LEGEND:
- TRAFFIC DRUM OR 36" POST TUBE DELINEATOR
  - SIGN WITH FLAG TREE
  - FLASHING RIGHT ARROW
  - WORK AREA
  - TRAFFIC DIRECTION
  - BARRICADE

**CITY OF TORRANCE - WORK AREA TRAFFIC CONTROL**

DATE ISSUED  
23 JUL 2009

**ARTERIAL  
MULTI-LANE CLOSURE**

ROBERT J. BESTE  
PUBLIC WORKS DIRECTOR  
R.C.E. NO. 50737

*RB/BJA*

STANDARD NO.  
**T1008**  
SHEET 1 OF 1