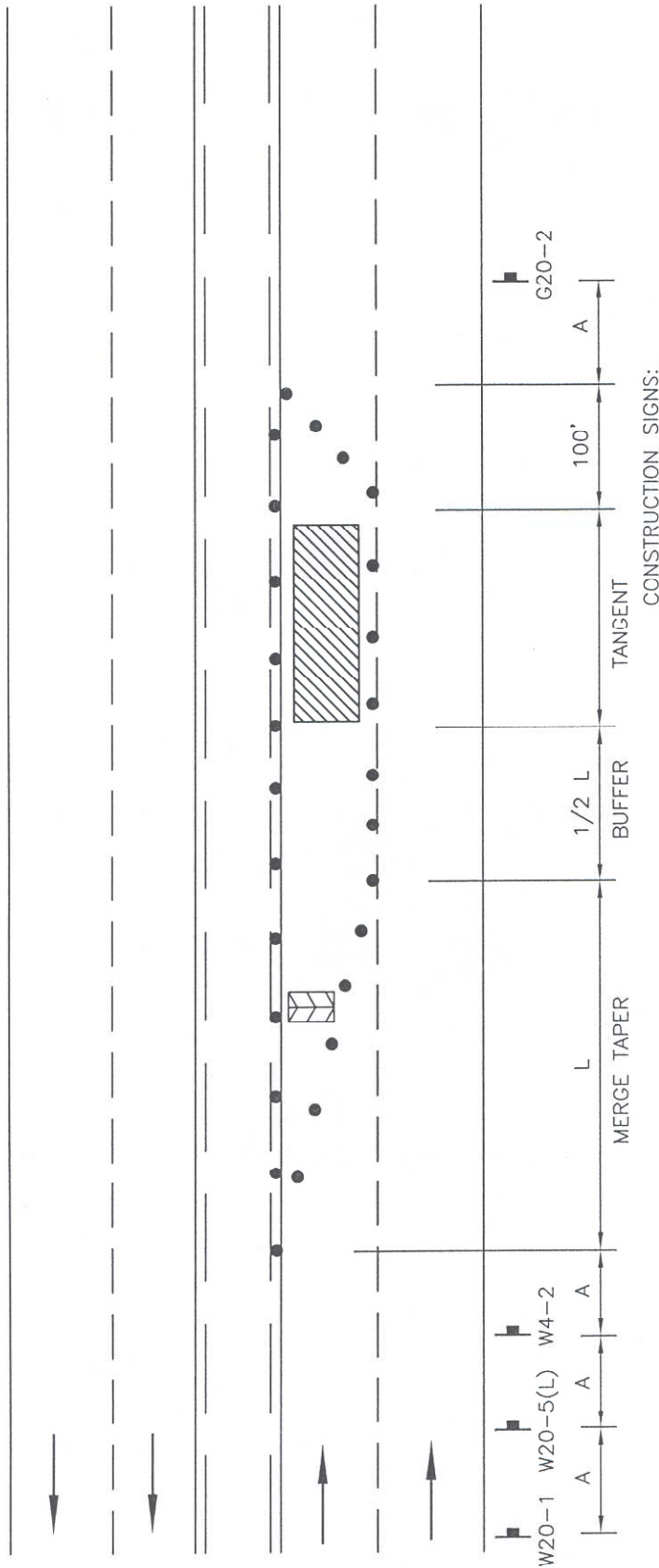


TT/T1005

DATE ISSUED 19 FEB 2008	<b>CITY OF TORRANCE - WORK AREA TRAFFIC CONTROL</b>  <b>ARTERIAL &amp; COLLECTOR</b> <b>LEFT LANE CLOSURE</b>  ROBERT J. BESTE PUBLIC WORKS DIRECTOR R.C.E. NO. 50737	STANDARD NO. <b>T1005</b>  SHEET 1 OF 1
----------------------------	--	--



DESIGN SPEED	MERGE TAPER LENGTH (L)	DELINEATOR SPACING		DISTANCE BETWEEN SIGNS (A)	BUFFER LENGTH (1/2 L)
		(TAPER)	(TANGENT)		
30 MPH	180 FT.	30 FT.	60 FT.	100 FT.	90 FT.
35 MPH	245 FT.	35 FT.	70 FT.	100 FT.	125 FT.
40 MPH	320 FT.	40 FT.	80 FT.	100 FT.	160 FT.
45 MPH	540 FT.	45 FT.	90 FT.	350 FT.	270 FT.
50 MPH	600 FT.	50 FT.	100 FT.	350 FT.	300 FT.

CONSTRUCTION SIGNS:

W20-1 : ROAD WORK AHEAD  
 W20-5(L) : LEFT LANE CLOSED AHEAD  
 W4-2 : LANE END (SYMBOL)  
 G20-2 : END ROAD WORK (OPTIONAL)

- LEGEND:
- TRAFFIC DRUM OR 36" POST TUBE DELINEATOR
  - ▬ SIGN WITH FLAG TREE
  - ▭ FLASHING RIGHT ARROW
  - ▨ WORK AREA
  - TRAFFIC DIRECTION