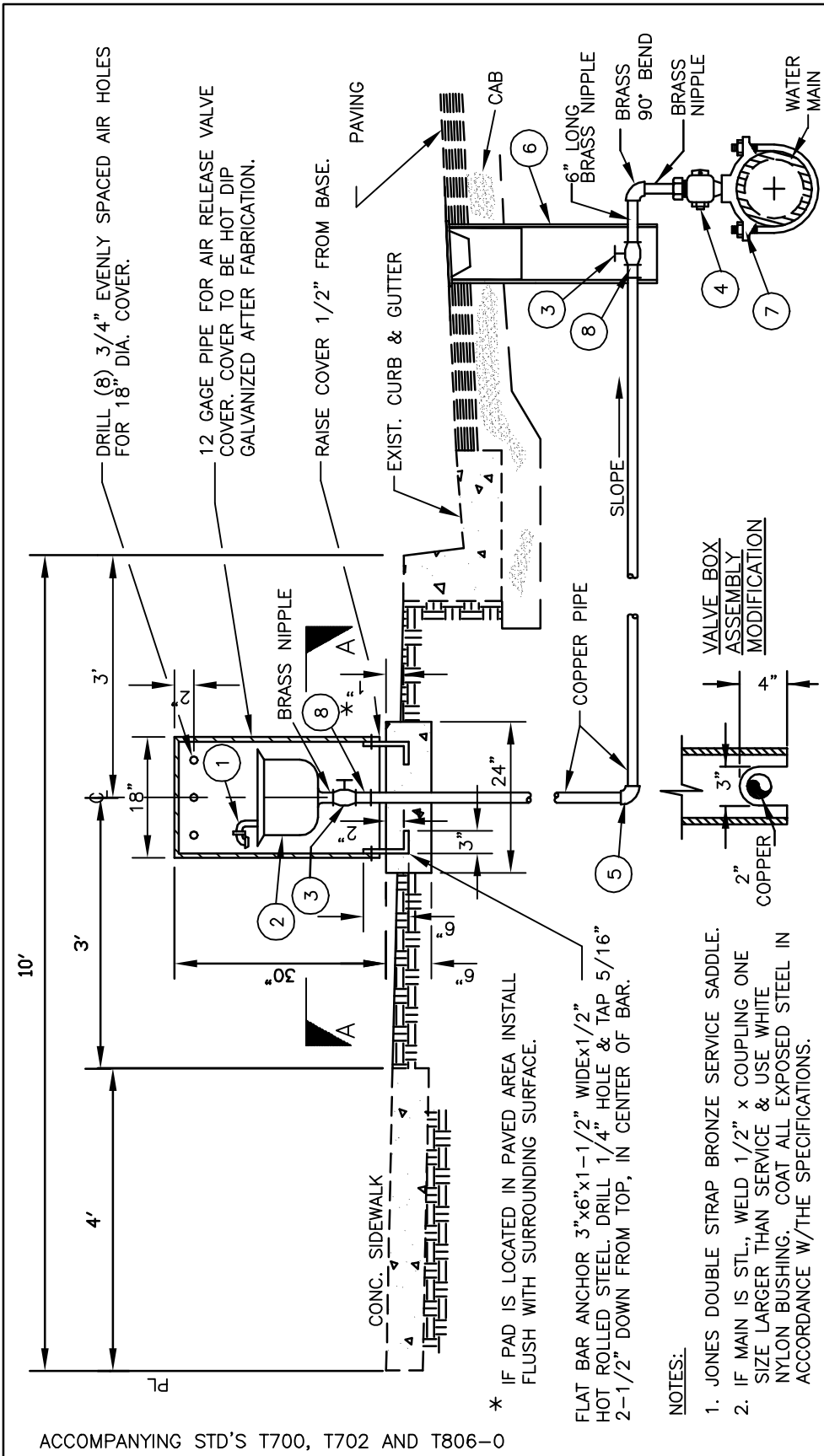
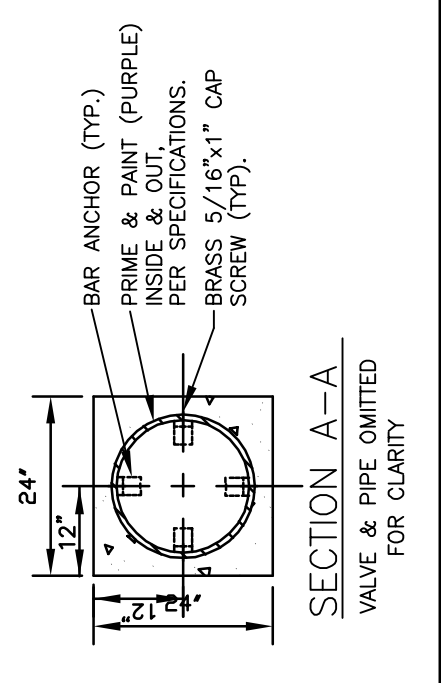


EM/T805-0



ITEM	PART NO.	*SIZE	DESCRIPTION
1	143C APCO	1" OR 2"	COMBINATION AIR & VACUUM RELEASE VALVE *(FOR MAIN SIZE >= 16" USE 2", FOR MAIN SIZE < 16", USE 1")
2	145C APCO	1"	NIPPLE & (2) 90° STEEL ELBOWS WITH SCREEN
3	B11-444(FORD) B11-777(FORD) FB 1700-4(FORD) FB 1700-7(FORD)	1" 2" 1" 2"	COMBINATION AIR & VACUUM RELEASE VALVE
4	J-1900(JONES) J-1900(JONES) J-1931(JONES) J-1961(JONES)	1" 2" 1" 2"	BALL VALVE, FIPxFIP
5		1" OR 2"	CORPORATION STOP, MIPxFIP
6			90° COPPER ELBOW, SIXXSJ
7	J979	1" OR 2" IP	VALVE BOX ASSEMBLY (SEE T712) MOD.
8		1" OR 2"	JONES SERVICE SADDLE-DOUBLE STRAP SJ x MALE IP



ACCOMPANYING STD'S T700, T702 AND T806-0

**CITY OF TORRANCE - ENGINEERING DEPARTMENT**

**RECLAIMED WATER  
AIR AND VACUUM RELEASE VALVE**

RICHARD W. BURTT  
ENGINEERING DIRECTOR  
R.C.E. NO. 32862

STANDARD NO.  
**T805-0**

SHEET 1 OF 1