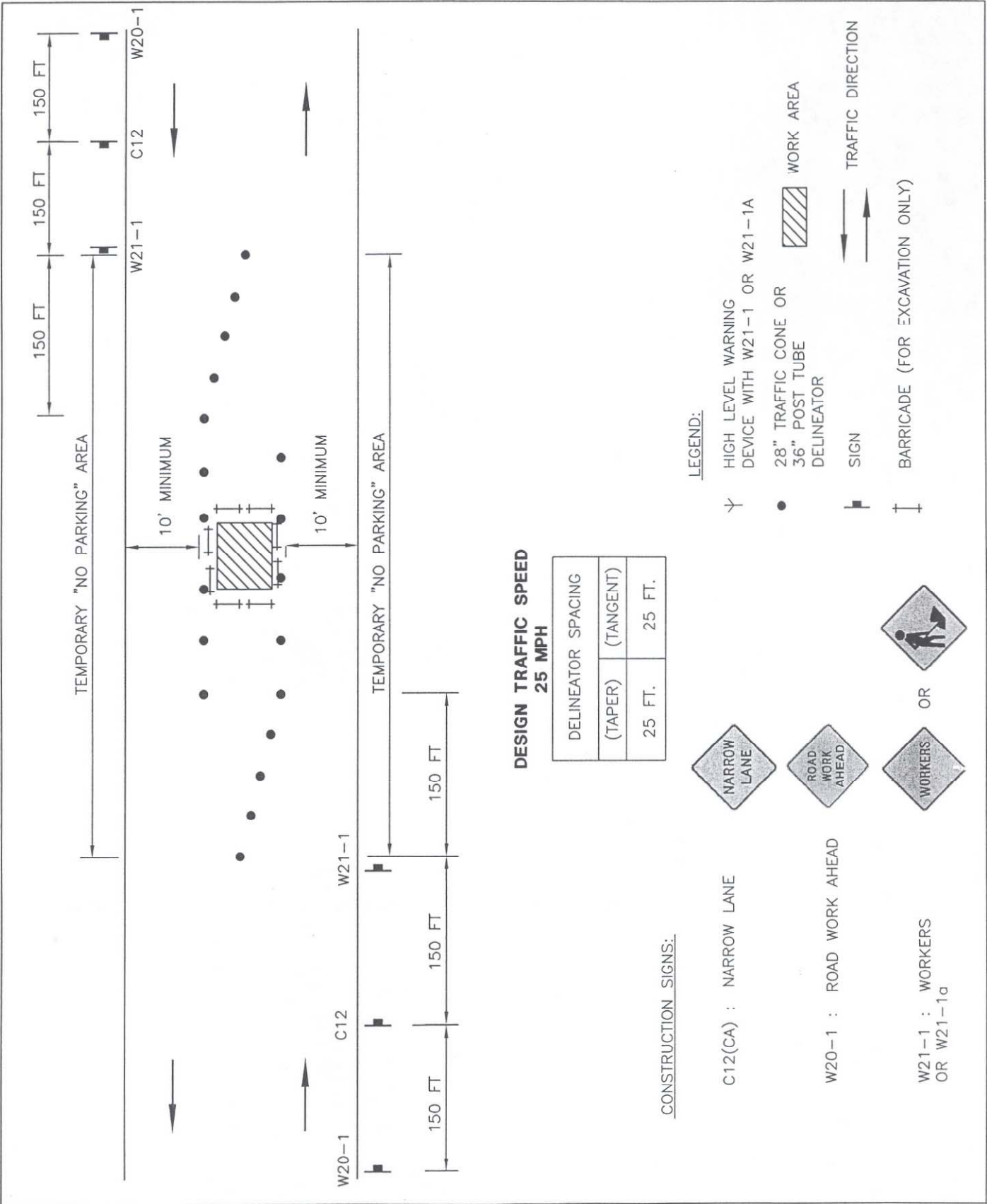


TT\T1002



CITY OF TORRANCE - WORK AREA TRAFFIC CONTROL

DATE ISSUED

19 FEB 2008

**TYPICAL CENTER STREET CLOSURE
FOR LOCAL STREET**

ROBERT J. BESTE
PUBLIC WORKS DIRECTOR
R.C.E. NO. 50737

STANDARD NO.

T1002

SHEET 1 OF 1