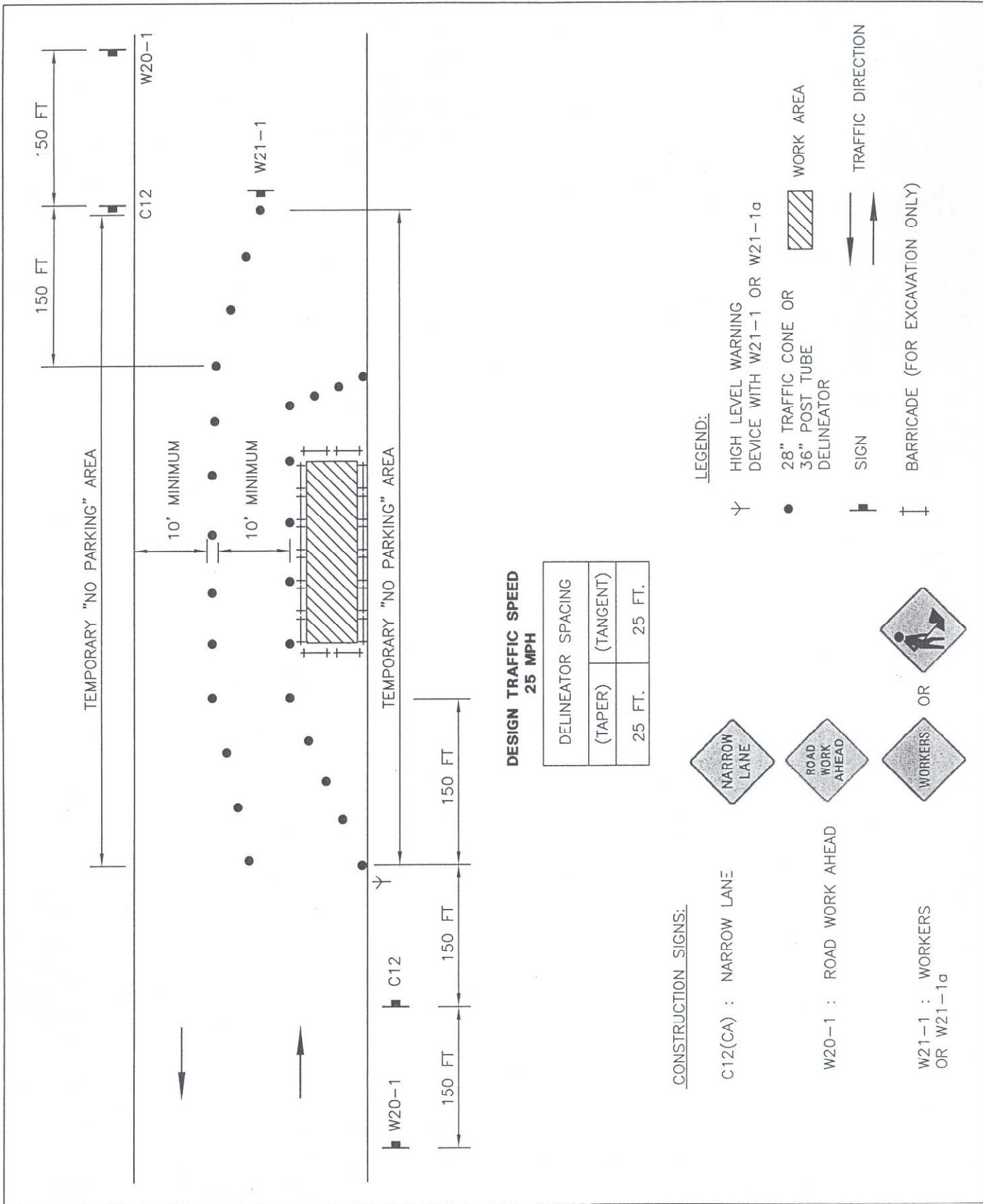


TT/T1001



CITY OF TORRANCE - WORK AREA TRAFFIC CONTROL

DATE ISSUED

19 FEB 2008

TYPICAL CURBSIDE STREET CLOSURE FOR LOCAL STREET

ROBERT J. BESTE
PUBLIC WORKS DIRECTOR
R.C.E. NO. 50737

STANDARD NO.

T1001

SHEET 1 OF 1