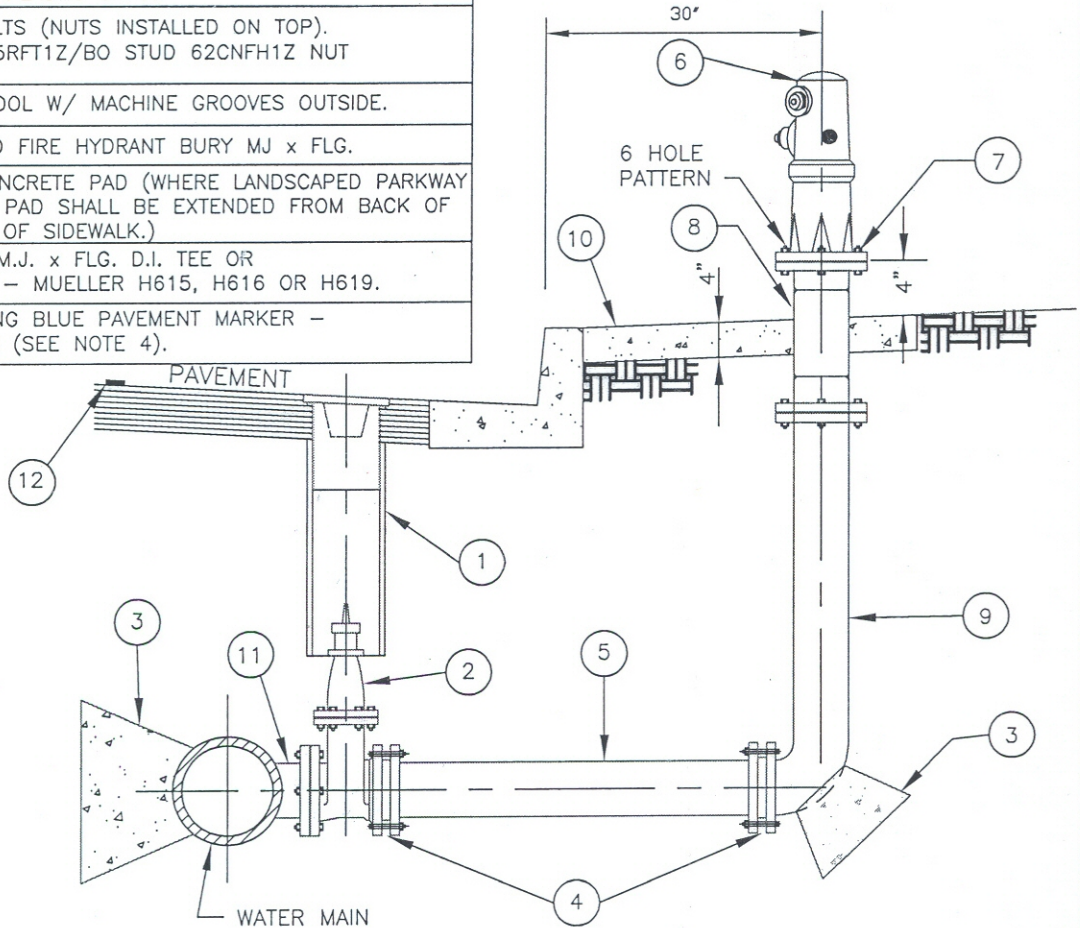


ITEM	MATERIALS
①	VALVE BOX ASSEMBLY PER T712.
②	6" VALVE MUELLER NO. A2362-16 W/EVERDUR STEM & SS 316 FASTENERS W/2" NUT & NRS OPENING CCW.
③	CONCRETE THRUST BLOCK PER T713.
④	RESTRAINED JOINTS
⑤	6" D.I.P. (CLASS 350) SERVICE LINE
⑥	FIRE HYDRANT - JAMES JONES CO. J3700-R WITH CHAIN AND PLASTIC CAPS.
⑦	BREAK-AWAY BOLTS (NUTS INSTALLED ON TOP). TRIPAC 62C35625RFT1Z/BO STUD 62CNFH1Z NUT
⑧	BREAK-AWAY SPOOL W/ MACHINE GROOVES OUTSIDE.
⑨	6" CEMENT LINED FIRE HYDRANT BURY MJ x FLG.
⑩	4' x 4' x 4" CONCRETE PAD (WHERE LANDSCAPED PARKWAY IS 4' WIDE, PCC PAD SHALL BE EXTENDED FROM BACK OF CURB TO FRONT OF SIDEWALK.)
⑪	MAIN SIZE x 6" M.J. x FLG. D.I. TEE OR TAPPING SLEEVE - MUELLER H615, H616 OR H619.
⑫	2-WAY REFLECTING BLUE PAVEMENT MARKER - STIMSONITE 88AB (SEE NOTE 4).



NOTES:

- SERVICE LINE SHALL BE INSTALLED LEVEL WITH MAINLINE UNLESS SHOWN OTHERWISE ON PLAN.
- ALL PARTS OF THE FACILITY ABOVE GROUND SHALL BE THOROUGHLY CLEANED BY WIRE BRUSHING AND PAINTED WITH 3 COATS OF RUSTOLEUM No. 7773 OR APPROVED EQUAL. COLOR OF HYDRANT SHALL BE PAINTED WITH 2 COATS OF SHERWIN WILLIAMS #B66Y00600 S YELLOW. TOTAL THICKNESS OF COATINGS SHALL BE A MINIMUM OF 6 MILS.
- FIRE HYDRANT SHALL BE LOCATED 5 FEET MIN. FROM DRIVEWAYS END/BEGINNING OF CURB RETURN OR OTHER OBSTRUCTIONS. NO FIRE HYDRANT SHALL BE LOCATED IN THE CURB RADIUS.
- PLACE MARKER SIX INCHES FROM CENTER OF ROADWAY OR PAINTED CENTERLINE ON SIDE NEAREST THE HYDRANT.

ACCOMPANYING STD'S T700, T701, T712, T713, 723 AND T116.

CITY OF TORRANCE

DATE ISSUED

NOV 2015

**TYPICAL FIRE HYDRANT INSTALLATION FOR
LOCAL STREETS & NON-HIGH PRESSURE ZONE**

ROBERT J. BESTE
PUBLIC WORKS DIRECTOR
R.C.E. NO. 50737

Handwritten signature: RJA / BA

STANDARD NO.

T 705

SHEET 1 OF 1