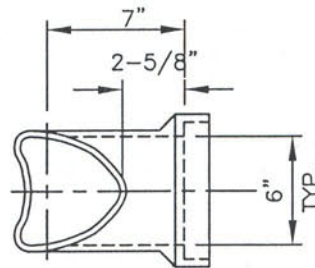


SIDE VIEW

END VIEW



SADDLE PLAN

SHOWING CONTACT OPENING

NOTES:

1. OPENING IN MAIN SEWER SHALL BE CUT TO EXACTLY FIT THE SADDLE AND THE SADDLE SHALL BE CAREFULLY ALIGNED, FITTED & ENCASED IN CEMENT MORTAR AS SHOWN.
2. SADDLE INSTALLATION SHALL BE PERFORMED IN THE PRESENCE OF AN INSPECTOR.
3. INSTALLATION SHALL BE CARRIED OUT IN SUCH A MANNER AS TO PREVENT THE INTRODUCTION OF DIRT, BROKEN PIPE, OR OTHER FOREIGN MATTER INTO THE SEWER PIPE.
4. PIPE TO BE SADDLED SHALL BE A MINIMUM OF ONE SIZE LARGER THAN SIZE OF CONNECTING LATERAL BUT IN NO CASE SHALL THE SIZE OF THE CONNECTING LATERAL BE LARGER THAN 8".

CITY OF TORRANCE

DATE ISSUED	SADDLE CONNECTION	STANDARD NO.
02 JUL 2008		T203
ROBERT J. BESTE PUBLIC WORKS DIRECTOR R.C.E. NO. 50737		 SHEET 1 OF 1

TT\T203